

Endpoint Solutions

STATEMENT OF QUALIFICATIONS

PREPARED BY

ENDPOINT SOLUTIONS CORP.

6871 South Lovers Lane
Franklin, Wisconsin 53132

Phone: 414-427-1200

Fax: 414-427-1259

TABLE OF CONTENTS

Our Story.....	1
Company Description.....	2
Service Offerings.....	4
Employee Biographies	6
References.....	10



APPENDICIES

Appendix A Service Sheets

Appendix B Key Personnel Resumes

Appendix C Certificate of Insurance

Published by

Endpoint Solutions Corp.

Statement of Confidentiality

The information in this Statement of Qualifications is confidential and proprietary. It has been made available solely for the consideration and evaluation of this information. In no event shall all or any portion of this Statement of Qualifications be disclosed or disseminated without the express written permission of Endpoint Solutions Corp.

© 2015 Endpoint Solutions Corp. All Rights Reserved

OUR STORY

The Principals of Endpoint have been working closely together for the past 10 years and have a track record of securing and successfully completing projects at both a large international engineering consulting firm as well as a small, regional niche-based environmental consulting company. However, while employed at both companies, we felt that we were unable to truly treat our clients and subcontractors in a manner they both deserved. Only by starting our own company and instilling these ideals in the very fabric of the company were we able to accomplish this goal.



In July 2008, Endpoint Solutions was formed out of a desire to provide clients with cost-effective, common sense approaches all while respecting our coworkers, employees, subcontractors and clients. The name Endpoint Solutions provides a simple clue to our consulting strategy: provide a solution for our clients' problems that focuses on achieving the desired endpoint. We do not hesitate to quickly and cost-effectively bring a project to its endpoint because we believe this is the ultimate value to our clients and they will subsequently look to Endpoint the next time a need arises. We also understand that our business is relationship-driven. Therefore, by focusing on building and nurturing long-term relationships, we hope to create a sustainable business for years to come.

In addition to our client-focused approach, we also felt a better business model was available to attract, motivate and retain quality professionals. By being straightforward and honest with our professionals regarding our expectations, business expenses and their compensation, we are able to form a bond of mutual respect.

In addition, by providing our professionals with immediate compensation for clients and projects brought to Endpoint, we feel we have created a successful method to motivate our professionals to attract and maintain client relationships and instill a true "ownership stake" in their projects.

COMPANY DESCRIPTION

Endpoint professionals have extensive experience completing a wide variety of environmental, health & safety, sustainability, and civil engineering projects, as well as the flexibility for innovative solutions and the willingness to assume calculated risk. Overall, Endpoint professionals average over 20 years experience. Throughout their careers, Endpoint staff have nurtured relationships with their clients as well as with a wide variety of consulting firms and vendors that provide complementary services at the same high standard of care as our clients have come to expect from Endpoint. By acting as a single point of contact for our clients to this network of alliance partners, we provide a solution to address nearly any issue.



Endpoint focuses on a few strategic practices that will maintain and nurture client relationships. These practices include:

- Emphasizing high quality and innovative solutions with an end-focused approach. We differentiate ourselves from our competition by using firm-fixed price and lump sum contracting throughout the various phases of a project to eliminate cost overruns and minimize the need for constant client oversight. Our main goal is to help our clients be successful. By delivering beyond expectations, our clients do not have to worry about surprises when they work with Endpoint.
- Building relationships with our clients. Through the implementation of a strategic alliance network of professionals, Endpoint has the flexibility to develop long-term relationships with clients that may only need our services occasionally, but know that we can find solutions to their problems, whatever they may be and whenever they may arise.

Endpoint distinguishes itself from its competition by being:

- Less risk averse than other firms;
- Relationship focused;
- Innovative with firm-fixed price and lump sum projects

and tasks;

- Flexible in service offerings;
- Committed to begin each project with an end-focused approach; and,
- An access point to a wide variety of qualified contractors and professionals.



Project tasks that will not be performed by Endpoint will be subcontracted to our alliance partners to provide seamless service and the most cost-effective and technically superior product in the marketplace. Endpoint utilizes very strict but fair specifications and agreements for all subcontracted work scopes, which effectively minimizes the chance for project overruns. We place very high expectations on our subcontractors and change orders are not easily accepted. Our experience includes the successful completion of projects throughout the United States and abroad.

Since inception, Endpoint has quickly risen on the Milwaukee Business Journal's list of largest Milwaukee-area environmental consultants (currently No. 8 locally).

Endpoint is incorporated in the State of Wisconsin and qualifies as a small business enterprise (SBE). Endpoint is a Wisconsin registered professional engineering (#3216-011) and professional geologist (#74-201) firm as well as a registered Petroleum Environmental Cleanup Fund Act (PECFA) firm, approved PECFA Agent and a certified Tank Specialty Firm. In addition, Endpoint is registered in the Central Contractor Registry (CCR) and is considered a Small Business for Engineering Services (NAICS Code 541330), Environmental Consulting Services (NAICS Code 541620) and All Other Professional, Scientific and Technical Services (NAICS Code 541990).

The General Services Administration (GSA) schedule recently awarded to Endpoint has allowed Endpoint to add the U.S. Forest Service, the U.S. Coast Guard and Wisconsin Air National Guard to their growing list of federal clients. Endpoint has been awarded contracts with each of these federal agencies and the service provided by Endpoint on these initial projects has received excellent reviews by the contracting agencies.

SERVICE OFFERINGS

Services offered by Endpoint are a combination of traditional and specialized environmental consulting and civil engineering services. Utilizing their extensive experience, delivery of technical solutions and high level of customer service, Endpoint professionals have developed solid and long-lasting business relationships with our clients. Unencumbered of traditional consulting firm bureaucracy, Endpoint will utilize their expertise and customer service to provide an enhanced level of consulting services in the following areas.



General Consulting Services

- Environmental Site Assessments—Phase I & II
- Environmental Monitoring, Sampling and Analysis
- Tank Closure Assessments
- Permitting and Regulatory Reporting
- PECFA Consulting and Agent Services

Investigative Services

- Due Diligence, Data Gap Assessments and Liability Quantifications
- Subsurface Investigations
- RCRA and CERCLA Site Investigations and Characterization
- Groundwater Contaminant Fate/Transport Modeling
- Environmental Impact Statements
- Asbestos/Lead Survey Management
- Brownfield Restoration Assessments

Remediation Services

- Corrective Action Analyses, Planning and Forecasting
- Feasibility and Corrective Measures Studies
- Brownfield Grant Support
- Remedial Design for Hazardous & Petroleum Contaminated Sites
- Remediation System Design/Pilot Testing
- Remedial Action Plan Development and Implementation
- Risk-Based Corrective Action
- Remedial Action Oversight

Business Solutions

- Environmental, Health and Safety Compliance, Training and Auditing
- Sustainability Assessments
- ISO 14001 and OHSAS 18001 Program Development/Implementation
- Health & Safety Program Evaluation & Training
- Energy Conservation Best Management Practices
- Waste Minimization and Management Services
- Industrial Hygiene Monitoring

Construction and Program Management

- Treatment System Operations and Management
- Remedial Construction Management
- Guaranteed Fixed Price Remediation
- Remedial Construction—Soil and Groundwater
- Remedial Construction—Sediment
- Redevelopment Planning & Associated Remediation
- Facility Decommissioning and Demolition Management

Civil Engineering Services

- Storm Water Pollution Prevention Plans and Permitting
- Storm Water Management Planning
- Green Infrastructure Design
- Floodplain Evaluation
- Spill Prevention Control and Countermeasure Plans and Permitting
- Engineering Design-Build Projects
- Fuel System, Process and Storage Tank Permitting, Certification and Design
- Erosion and Sedimentation Control Planning and Design
- Sanitary Sewer/Water Distribution Evaluation Studies
- Water/Wastewater Design

Service sheets which discuss our capabilities in specific areas of expertise are attached in **Appendix A**.



KEY EMPLOYEE BIOGRAPHIES

Endpoint is a dynamic, growing firm and employs only quality-minded individuals who complement our service offerings and share our client-focused philosophies. Below are brief summaries of key personnel qualifications and experience, with complete resumes included in **Appendix B**.

Robert A. Cigale, P.G., is a Principal of Endpoint and brings over 23 years of diversified professional environmental consulting experience to Endpoint. Mr. Cigale is a licensed Professional Geologist, a Wisconsin Certified Asbestos Inspector and a registered PECFA consultant. His areas of expertise include: soil and groundwater investigations related to PECFA, BRAC and Brownfield redevelopment sites, remedial options evaluations, Phase I & II ESAs, remedial design and due diligence associated with third-party liability transfers. Mr. Cigale's client base includes chemical manufacturers, redevelopment authorities, municipalities, real estate developers, attorneys and utilities.



Kirk L. Kapfhammer, P.G., is a Principal of Endpoint and possesses over 20 years of professional environmental consulting experience. Mr. Kapfhammer is a licensed Professional Geologist and is a Wisconsin-Certified Tank Assessor and a registered PECFA consultant. His areas of expertise include: environmental project management, Phase I & II ESAs, Brownfield redevelopment, remedial action evaluation and implementation, third party liability transfer evaluations, regulatory compliance planning and audits, safety and environmental planning, environmental due diligence and international project management. Mr. Kapfhammer's client base includes manufacturers, attorneys, lenders, redevelopment authorities, municipalities, real estate developers and utilities.

Mark J.K. Penzkover, P.E., is a Principal of Endpoint and brings over 23 years of professional environmental consulting and civil engineering experience to Endpoint. Mr. Penzkover is a licensed Professional Engineer and registered PECFA consultant in Wisconsin, as well as a Wisconsin Licensed Underground Storage Tank Installer. His areas of expertise include: the evaluation, design, specification and implementation of innova-

tive remedial technologies; management of third-party liability transfer projects; design of traditional remedial systems; contract administration; and construction project management on a wide range of civil and environmental engineering projects.

Wade C. Wollermann, P.E., is a Principal of Endpoint and has over 14 years of experience in civil and environmental engineering and construction management. Mr. Wollermann is a licensed Professional Engineer, a registered PECFA consultant and a Wisconsin Licensed Aboveground and Underground Storage Tank Installer. Mr. Wollermann's expertise includes design and construction of aboveground storage tank systems, industrial water/wastewater collection systems, sanitary sewer evaluation studies, sanitary and storm water collection systems and groundwater remediation systems. His work has included treatment system optimization investigations, operations and maintenance of privatized utilities, preparation of project drawings and specifications, investigative sampling, and construction oversight.



Joseph E. Mentzer, P.E., is a Principal of Endpoint and is a Wisconsin licensed Professional Engineer and a Wisconsin Licensed AST and UST Installer and Inspector. Mr. Mentzer has over 24 years of engineering and project management experience including significant experience providing design and compliance services to companies that use, handle, process and store hazardous, flammable and combustible materials as liquids, solids and compressed gases. Mr. Mentzer has worked with clients, mechanical contractors and other service providers to design tank and storage systems to satisfy Federal, State and local requirements and to obtain necessary permits and approvals. He also regularly assists clients with inspection and upgrading existing storage equipment to meet current regulations and continue service.

Mindy R. Ochs, P.E., is a Senior Engineer at Endpoint and an accomplished leader with over 17 years of experience in the Environmental, Health and Safety field. Mindy is a Professional Engineer in Wisconsin and much of her experience has involved air permitting/compliance and EHS management within the chemical manufacturing and non-metallic mining industry throughout Wisconsin and the United States. Mindy provides corporate level EHS strategy to her clientele as well as facility-

level solutions and technical assistance with day-to-day compliance issues, training, reporting and regulatory negotiation.

Marie M. Venné, P.E., is a Senior Engineer at Endpoint and registered as a Professional Engineer in Wisconsin with over 11 years experience in civil and environmental engineering. Her expertise includes design, construction, and implementation of various innovative and cost-effective technologies for soil, groundwater and soil vapor intrusion scenarios. Her work has included management and coordination of subcontractors, preparation of project drawings and specifications, design, operation and maintenance of remedial systems, investigative and monitoring sampling, construction oversight, data analysis and reporting.



Gary A. Fahl, is a Senior Advisor at Endpoint with over 30 years of private sector manufacturing experience. Mr. Fahl's executive level management experience focused on developing, planning and implementing innovative global environmental and safety strategies including ISO 14001 registrations and OHSAS18001 program development. Mr. Fahl's clients include environmental, health and safety, facilities and plant services managers looking to benefit from his extensive experience in implementing cost saving programs on both facility and corporate-wide platforms.

David Neste, has more than 10 years experience of diversified experience as an environmental professional. His work includes: Phase I/Phase II Environmental Site Assessments, tank closure assessments, site investigations involving soil and groundwater sampling, as well as construction and demolition oversight. Mr. Neste also has been involved with the development and implementation of non-metallic mining reclamation plans and Storm Water Pollution Prevention Plans, in addition to mine compliance monitoring.

Timothy C. Petrick, is a Senior Technician and brings over 25 years of diversified environmental consulting experience to Endpoint Solutions. Tim is a licensed Asbestos Inspector and Site Assessor in Wisconsin. Mr. Petrick's areas of expertise include: construction oversight of environmental remediations, site demolitions, Phase I Environmental Site Assessments, asbestos inspections and abatements. Mr. Petrick has also been

involved with site investigations including soil borings, monitoring well installations, soil and groundwater sampling, and well abandonments.

Nick W. Draskovich is a Senior Engineering Technician with Endpoint and brings over 16 years experience in site engineering, construction management, and CAD drafting operations in Civil, Environmental and Architectural disciplines. Mr. Draskovich's experience includes roles as a Civil 3D Instructor at a local college as well as trainer and mentor of CAD staff at Endpoint. Mr. Draskovich responsibilities include preparation of plan sets, Quality Assurance and Quality Control for drawings and standards, exhibits/figures and 3D models, including utilities, underground facilities, sediment dredging, ash landfills, quantity take-offs, visual conceptual models and before and after 3D renderings.



Alex J. Mentzer is a certified engineer in training with three years of work experience in the environmental, health and safety field. His experience includes assembling air quality permit applications, emissions quantifications, air dispersion modeling, BACT analysis, and regulatory reviews at both state and federal levels. Alex is also experienced in preparing Spill Prevention Control and Countermeasure (SPCC) plans. His work has aided clients ranging from chemical distributors to limestone quarries.

Sarah Q. Ehlinger is a Staff Geologist with 8 years of experience in community-based environmental remediation projects in southeastern Wisconsin, Eastern Europe, and West Africa. Sarah has assisted clients with groundwater monitoring and risk assessments, watershed management, Storm Water Pollution Prevention plans (SWPPPs), Phase I ESA's and grant writing. Sarah also has experience in EHS consulting in regards to regulatory compliance, industrial hygiene testing, and lockout/tagout procedures.

ENDPOINT REFERENCES

Mr. Dan Hoppenjan
Environmental Leader
Cummins Filtration
1801 U.S. Highway 51-138
Stoughton, WI 53589-0428
(608) 873-4258

Mr. Brian Roper
EH&S Manager
EMCO Chemical Distributors, Inc.
8601 95th Street
Pleasant Prairie, WI 53158
(262) 947-0202

Ms. Shirley Scharff
Manager, Environmental Compliance
Integrays Business Solutions
P.O. Box 19001
Green Bay, WI 54307-9001
(920) 433-1396

Mr. Don Johnston, CHMM
Corporate Environmental Manager
U.S. Venture, Inc.
425 Better Way
Appleton, WI 54915
(920) 735-8228

Ms. Mary Jo Lange
City Engineer/Director of Public Works
City of Cudahy
5050 South Lake Drive
Cudahy, WI 53110
(414) 769-2212



APPENDIX A

SERVICE SHEETS

Air Quality Services

Alternative Fuel Systems Engineering

Aviation Fueling System Engineering

Chemical & Petroleum System Engineering

Contract Support Services

Divestiture, Merger and Acquisition Services

Environmental, Health and Safety Compliance

Environmental Monitoring and Sampling

Investigative and Assessment Services

PECFA Consulting and Agent Services

Process Safety Management (PSM) Services

Property Acquisition Services

Site Remediation Services

Sustainable Remediation

Storm Water Management Services

SPCC Compliance & Engineering

Sustainability Services

Training Services

Water Resources Services





AIR QUALITY SERVICES

The large volume of air quality regulations is complex to navigate, primarily due to the spatial variability of the rules both between and within the states. Moreover, the air quality regulations are most often process-specific for the same pollutant species. We can help your business to negotiate the best possible construction and operating permits with the federal and state air regulatory agencies, and thereby provide you the greatest flexibility to attain your business goals.

The staff at Endpoint Solutions can also assist you with devising strategies for the monitoring, recordkeeping and reporting requirements that are integral permit conditions. In addition, should the need arise, Endpoint Solutions can provide technical assistance in negotiating noncompliance issues with the regulatory agencies.

FOR MORE INFORMATION

To learn more about the services offered by Endpoint Solutions, visit: www.endpointcorporation.com

If you have any questions or would like to discuss your specific needs, please email info@endpointcorporation.com or contact us at the numbers listed below.

ENDPOINT'S AIR QUALITY SERVICES INCLUDE:

- Federal and state air construction and operating permit acquisition for new and existing sources
- Air permit modifications to improve operating flexibility
- BACT/RACT/LAER/MACT analysis
- Control technology evaluations
- Greenhouse gas emission inventories
- Monitoring, reporting, and record-keeping plans
- Risk management plans
- Noncompliance issue negotiations with regulatory agencies

Endpoint Solutions' staff has more than 35 years of experience in the air quality regulatory arena across the United States and internationally.



ALTERNATIVE FUEL SYSTEMS

The newest trend in motor vehicle fueling includes offering alternative fuels such as compressed natural gas (CNG), liquefied natural gas (LNG), liquefied petroleum gas (LPG), hydrogen or propane among other options. The design, installation, inspection and maintenance of such systems requires a specialized knowledge of the hazards involved, State and Federal rules, as well as a thorough understanding of the site requirements and consumer needs. Endpoint Solutions professionals have over 20 years experience working with fuel and flammable/hazardous liquid storage systems and have designed and permitted first of their kind facilities for providing alternative fuels. The professionals at Endpoint rely on that experience to keep clients ahead of the curve and help plan new system, design, obtain permits and manage the construction process from start to finish. From new alternative systems to inspection and maintenance of existing fuel systems, we help clients retain their edge in the fuel storage and distribution marketplace.

FOR MORE INFORMATION

To learn more about the services offered by Endpoint Solutions, visit: www.endpointcorporation.com

If you have any questions or would like to discuss your specific needs, please email info@endpointcorporation.com or contact us at the numbers listed below.

ENDPOINT'S EXPERTISE:

Our engineers have been at the forefront of planning, designing and installing these facilities for our clients to provide an alternative to traditional fuel options.

- Public fueling and fleet fueling systems
- Site planning and design
- State and local construction and installation permitting
- Containment design
- Underground storage and above-ground tank system evaluations and upgrades
- Process Safety Management Programs for flammable/hazardous liquids & chemicals
- Agency negotiations



AVIATION FUELING SYSTEMS

The design, installation, inspection and maintenance of aviation fueling systems requires a specialized knowledge of State and Federal rules, as well as thorough understanding of the site requirements and performance needs. Because of the high priority placed on the quality of the fuels being stored and dispensed by these systems, particular care must be taken to ensure the integrity of the fuel storage and delivery systems. Our engineers can help your facility plan, select, design, install and maintain the appropriate type of system for your site which will continue to provide quality product in a safe manner for years to come.

FOR MORE INFORMATION

To learn more about the services offered by Endpoint Solutions, visit: www.endpointcorporation.com

If you have any questions or would like to discuss your specific needs, please email info@endpointcorporation.com or contact us at the numbers listed below.

ENDPOINT'S ENGINEERING SERVICES INCLUDE:

Endpoint Solutions professionals have over 20 years experience working with aviation fuel and flammable liquid storage systems.

The professionals at Endpoint can help you plan a new system, update an existing system or evaluate a system that you are considering acquiring. If improvements are needed, Endpoint can help you determine the best course of action, obtain the correct permits and implement the needed changes.

From something as simple as updating a system for code compliance to the design of a complex multiproduct storage system, we can help you get the job done.

- Site planning and design
- State and local construction and installation permits
- Preparation of Spill Prevention Control and Countermeasure plans (SPCC)
- Containment design
- Storage vessel recertification
- Underground storage and above-ground tank system evaluations and upgrades
- Process Safety Management programs
- Noncompliance issue negotiations with regulatory agencies



STORAGE SYSTEM ENGINEERING

Many companies store and handle chemicals for production or for distribution to others. Some of those chemicals can pose significant threats to workers, the public and the environment if not stored and handled properly. Whether the chemicals are stored under pressure or at atmospheric conditions, stored in aboveground systems or below ground systems and regardless of whether the material be a liquid, solid, gas, virgin material, intermediate product, or waste product, numerous local, state and federal rules apply. Endpoint Solutions helps owners and operators safely utilize these materials and comply with the applicable rules.

Endpoint's engineers and tank specialists have over 25 years of experience working with chemical storage systems. Endpoint can help plan a new system, update existing systems or evaluate a system being considered for acquisition. If improvements are needed, Endpoint can help determine the best course of action, provide design services, obtain the correct permits and implement the system upgrades.

FOR MORE INFORMATION

To learn more about the services offered by Endpoint Solutions, visit: www.endpointcorporation.com

If you have any questions or would like to discuss your specific needs, please email info@endpointcorporation.com or contact us at the numbers listed below.

ENDPOINT'S ENGINEERING SERVICES

From something as simple as getting the necessary permits for installation of a backup generator fuel tank to something as complex as constructing a large storage and chemical processing facility, we can help you get the job done.

- Storage system compliance evaluation
- Storage system and containment design
- Storage system upgrades
- State and local permitting
- Construction oversight
- Re-commissioning and recertification
- SPCC and Risk Management Plan preparation
- Process Safety Management programs
- Agency negotiations

INDUSTRIES SERVED

- Agriculture
- Aviation
- Chemical manufacturing/processing
- Food processing
- Light and heavy industry
- Petroleum marketing and distribution



COST EFFECTIVE ASSISTANCE

In order to effectively control project costs, Endpoint Solutions provides contractors clear and concise project specifications and bidding documents that require them to contractually assume risks associated with the scope, schedule and budget for the project.

Endpoint staff have extensive experience controlling project costs through effective project specifications, contracts and construction oversight. Endpoint Solutions' staff are experienced in the use of firm-fixed price and lump sum contracts to avoid contractor change orders.

We understand that extra effort spent prior to the commencement of the work to develop these contract documents will provide value-added benefits of completing the project on time and on budget.

FOR MORE INFORMATION

To learn more about the services offered by Endpoint Solutions, visit: www.endpointcorporation.com

If you have any questions or would like to discuss your specific needs, please email info@endpointcorporation.com or contact us at the numbers listed below.

ENDPOINT'S CONTRACT SUPPORT SERVICES INCLUDE:

- Preparation of project specifications and drawings
- Preparation of bid documents
- Bid administration
- Evaluation of bids
- Contract negotiation
- Contractor oversight and documentation
- Identification of architectural re-use and material salvage opportunities
- Invoice review and approval
- Planning documents & as-builts



MOVING THE TRANSACTION FORWARD

In the current economic climate, we understand that companies are looking to mergers and acquisitions (M&A) as a strategy to position themselves as necessary to take advantage of the existing conditions. While company assets and projected revenue represent the major factors in the valuation equation, it is imperative that the current environmental condition of the property also be taken into account during the valuation stage. Existing environmental issues at a facility due to historical operations can present a significant long-term financial liability for future owners if not addressed correctly before a deal is executed. In some cases, the life-cycle costs to address environmental concerns could eclipse the value of the real property and future revenue streams making what appears to be a good deal for both parties a liability. Furthermore, we understand that in most M&A deals, schedule is the main driver to successfully execute a deal.

FOR MORE INFORMATION

To learn more about the services offered by Endpoint Solutions, visit: www.endpointcorporation.com

If you have any questions or would like to discuss your specific needs, please email info@endpointcorporation.com or contact us at the numbers listed below.

OUR SOLUTION

At Endpoint Solutions, our environmental professionals are well versed in quickly and efficiently assessing a site for potential environmental concerns. Our environmental staff average over 20 years experience and have performed environmental assessments and liability quantification services for Fortune 500 companies throughout the world. At Endpoint Solutions, we differentiate ourselves by utilizing highly experienced professionals during all phases of the assessment. By utilizing highly experienced professionals, Endpoint Solutions is able to make decisions during the assessment to take best advantage of the due diligence schedule.

M&A ASSISTANCE SERVICES:

- Phase I & II Environmental Site Assessments (ESAs)
- Regulatory Compliance Audits
- Baseline Environmental Evaluation
- Life Cycle Cost Analysis
- Liability Quantification
- Remedial Cost Cap or Pollution Legal Liability Insurance Negotiation
- Property Condition Assessment (PCA)



COMPLIANCE SERVICES

The services that Endpoint Solutions performs associated with our Best Management Continuous Improvement (BMCi) process are fully adaptable to a variety of manufacturing and industrial settings. Our safety assessments look at OSHA requirements with additional best management practices developed through our extensive experience in the manufacturing sector. Contact Endpoint Solutions today and we will help craft a BMCi process and compliance program that meets your specific need.

FOR MORE INFORMATION

To learn more about the services offered by Endpoint Solutions, visit: www.endpointcorporation.com

If you have any questions or would like to discuss your specific needs, please email info@endpointcorporation.com or contact us at the numbers listed below.

ENDPOINT'S COMPLIANCE SERVICES INCLUDE:

- Comprehensive EHS Compliance and Risk Assessments
- Spill Prevention Control & Countermeasure Plans and Training
- EHS Training & Instruction
- Best Management Practices Review and Implementation
- EHS Outsourcing
- Storm Water Pollution Prevention
- MSDS Management, Organization and Interpretation
- Management System Development for OHSAS 18001 & ISO 14001
- Waste Minimization, Beneficial Reuse and Management Services
- Permit Reviews & Revisions
- Ergonomic Program Development
- OSHA Citation Review and Validity Determinations
- OSHA VPP Preparation
- NFPA 70E Compliance
- Environmental Monitoring & Sampling
- Industrial Hygiene Monitoring
- Noise Surveys
- International Regulatory Interpretation
- Business and Property Acquisitions or Divestitures
- Greenhouse Gas Emission Reduction Strategies
- Sustainability Assessment



ENDPOINT'S SERVICES INCLUDE:

- Soil sampling
- Soil vapor and indoor air sampling
- Groundwater sampling
- Surface water sampling
- Wastewater & process water sampling
- Sediment sampling
- Industrial hygiene monitoring
- Confined space entry
- Waste characterization and profiling

DESCRIPTION OF SERVICES

Endpoint Solutions environmental professionals routinely perform environmental monitoring & sampling for our clients as requirements under RCRA/CERCLA corrective actions, post-closure licenses, NPDES and state discharge permits, pretreatment permits, air quality permits, waste characterization and industrial hygiene programs. Our expertise encompasses a variety of environmental monitoring and sampling needs.

Endpoint can help take the headache out of keeping up with these compliance activities by handling all of the necessary scheduling, reporting, and coordination. Our competitive rates and experience guarantees that you will be able to reduce your current costs.

FOR MORE INFORMATION

To learn more about the services offered by Endpoint Solutions, visit: www.endpointcorporation.com

If you have any questions or would like to discuss your specific needs, please email info@endpointcorporation.com or contact us at the numbers listed below.



END-FOCUSED INVESTIGATION

The scope of an effective site assessment and investigation is developed with the end use of the property in mind. Too often, consultants get overzealous with collecting unnecessary data when the limited available funds could more cost-effectively be applied to site remediation and closure.

Endpoint Solutions' consultants are experienced in all facets of the environmental investigation and assessment process and produce quality data at all aspects of the investigation that is concise, dependable and directly applicable to the next steps of the project. Our experience also allows us to develop a detailed scope of work and provide our clients with firm-fixed pricing for the performance of the work.

FOR MORE INFORMATION

To learn more about the services offered by Endpoint Solutions, visit: www.endpointcorporation.com

If you have any questions or would like to discuss your specific needs, please email info@endpointcorporation.com or contact us at the numbers listed below.

ENDPOINT'S INVESTIGATION & ASSESSMENT SERVICES INCLUDE:

- Timely and efficient Phase I Environmental Assessments
- Phase II Environmental Site Assessments
- Building assessments
- Soil and groundwater assessments
- Sediment sampling
- Monitoring well and soil boring installation
- Long-term groundwater monitoring
- Free-product assessments
- Vapor intrusion assessments
- Case closure requests and documentation



PECFA SERVICES

We take an end-focused approach to our PECFA services because we understand the burden of an impacted property to a site owner or operator. Our goal is to progress each site as quickly as possible to closure and avoid unnecessary or excessive investigation when sufficient data exists to proceed to remediation or justify a request for closure.

Endpoint Solutions' staff has extensive experience performing PECFA work and our consultants average over 15 years in the industry.

To assist responsible parties with the furtherance of their eligible sites, Endpoint Solutions offers our services as a registered PECFA Agent whereby we assume the financial responsibility for the work necessary to bring your site to closure and allow our clients to focus on their core business.

FOR MORE INFORMATION

To learn more about the services offered by Endpoint Solutions, visit: www.endpointcorporation.com

If you have any questions or would like to discuss your specific needs, please email info@endpointcorporation.com or contact us at the numbers listed below.

ENDPOINT'S PECFA EXPERIENCE INCLUDES:

- Case closure requests and documentation
- Soil, soil vapor and groundwater assessments
- Monitoring well and soil boring installation
- Tank removal and assessments
- Long-term groundwater monitoring
- Free-product assessments
- Remedial action options evaluations and remedial action planning
- Groundwater treatment system design, construction and operation
- Remedial excavation and disposal
- Remediation system operations & maintenance
- Claim preparation and submittal



PROCESS SAFETY MANAGEMENT

Unexpected releases of toxic, reactive, or flammable liquids and gases in processes involving highly hazardous chemicals have been reported in various industries that use chemicals with such properties. Regardless of the industry that uses these highly hazardous chemicals, there is a potential for an accidental release any time they are not properly controlled, creating the possibility of disaster. It is imperative therefore, that facilities implement an effective, compliant Process Safety Management (PSM) Program.

The staff at Endpoint Solutions can assist with specific program elements or entire PSM program development. We help clients control project costs and schedule by integrating the required program elements into a usable program that fits facility-specific operations.

FOR MORE INFORMATION

To learn more about the services offered by Endpoint Solutions, visit: www.endpointcorporation.com

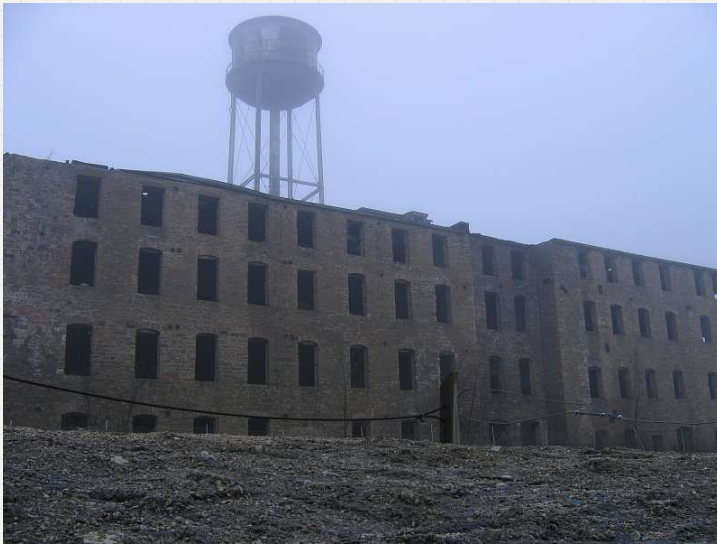
If you have any questions or would like to discuss your specific needs, please email info@endpointcorporation.com or contact us at the numbers listed below.

ENDPOINT'S PSM EXPERTISE:

Endpoint Solutions can provide technical assistance with process safety compliance issues, regulatory agency notices of noncompliance, process engineering assistance and Risk Management Plan (RMP) compliance.

ENDPOINT'S PSM SERVICES INCLUDE:

- Process Safety Information
- Process Hazard Analysis
- Operating Procedures
- Employee Participation
- Employee Training
- Contractor Issues
- Pre-Startup Safety Review
- Mechanical Integrity
- Hot Work Permits
- Management of Change
- Incident Investigation
- Emergency Planning and Response
- Compliance Audits
- Trade Secrets



PROPERTY TRANSACTIONS

Environmental Liabilities can be a key factor affecting real estate value and the viability of a property transaction. Endpoint Solutions can swiftly and efficiently assess environmental issues, identify risks and quantify liabilities to keep your transaction on track.

Endpoint commonly performs basic assessment activities such as Phase I & II Environmental Site Assessments (ESAs) and asbestos inspections at industrial, retail, multi-family and commercial properties. In addition, Endpoint is highly experienced in designing and implementing site investigation and remediation plans that assist our clients achieve regulatory closure quickly and efficiently.

Endpoint is also well-versed in the WDNR requirements related to redevelopment of contaminated properties (both regulatory open and closed sites). Endpoint can effectively and efficiently prepare and submit the necessary applications and documentation to obtain WDNR approval for your proposed development plans.

EXPERIENCE MATTERS:

When it comes to environmental due diligence, experience matters!! Some consultants offer bargain pricing and just “go through the motions”. This route exposes you to the risk of not identifying environmental issues that could turn your property upside-down. Is it worth it?

Endpoint professionals average over 20 years experience performing due diligence activities. This level of experience means we have the ability to effectively balance environmental risks with economic considerations. We work diligently to identify potential issues, realistically evaluate the risks and efficiently develop effective, common-sense solutions to support property transactions.

ENDPOINT'S SERVICES INCLUDE:

- Phase I Environmental Site Assessments
- Phase II Site Investigations
- Asbestos Inspections
- Property Condition Assessments (PCAs)
- Compliance Audits
- Liability Quantification
- Transaction Screens
- Application for Exemption to Construct on Historic Fill Sites
- NR 718 Soil Management Plans



END-FOCUSED REMEDIATION

Remediation of environmental contamination can be a challenging endeavor. Endpoint Solutions staff are highly experienced at designing remedial programs that integrate remediation with redevelopment plans. We offer expertise in a broad range of sustainable remedial applications including soil, groundwater and sediment at sites across the United States and abroad.

Endpoint Solutions will help meet remediation budgets by assuming project risk for cost and performance (schedule).

Our staff includes experienced construction managers and engineers which allow us to effectively manage subcontractors and minimize the risk of cost-overruns due to change orders.

FOR MORE INFORMATION

To learn more about the services offered by Endpoint Solutions, visit: www.endpointcorporation.com

If you have any questions or would like to discuss your specific needs, please email info@endpointcorporation.com or contact us at the numbers listed below.

ENDPOINT'S REMEDIATION SERVICES INCLUDE:

- Guaranteed, fixed-price remediation
- Regulatory negotiation
- Remedial action options evaluations, feasibility assessments and cost estimates
- Statistical evaluation of remedial alternatives
- Remedial action planning and design
- Cost estimation and remedy defense for insurance underwriting
- Bid solicitation and contract management
- Facility decommissioning and demolition management
- Construction management, oversight and documentation
- Post-remediation monitoring, operation and maintenance
- Closure assessment and documentation
- Sustainable remediation



ENDPOINT'S EXPERIENCE

Endpoint professionals were contracted to complete the investigation and remediation of a former manufacturing site in Kenosha, Wisconsin. The most cost effective remedial option consisted of excavating impacted soil to four-feet below grade with backfilling to create an exposure barrier. By working directly with City engineering staff, Endpoint professionals were able to coordinate the construction of a City storm water detention pond with the planned remediation to allow for the excavation spoils from the storm water detention pond project to be backhauled to be used as backfill. This coordination resulted in eliminating the need to excavate backfill from a third-party location, eliminated the need to dispose of the excavation spoils from the storm water detention pond project, and allowed the trucks transporting the impacted soil to backhaul the clean backfill thereby reducing energy consumption and air emission. This simple coordination resulted in an overall savings of approximately \$200,000 to the City on both projects.

FOR MORE INFORMATION

To learn more about the services offered by Endpoint Solutions, visit: www.endpointcorporation.com

If you have any questions or would like to discuss your specific needs, please email info@endpointcorporation.com or contact us at the numbers listed below.

SUSTAINABLE CONCEPTS

The United States Environmental Protection Agency (USEPA) defines sustainable development as meeting the needs of the present without compromising the need of future generations, while minimizing overall burdens to society. In circumstances where remediation is necessary for development to occur, sustainability practices require the practice of considering all environmental effects of remedy implementation and incorporation of options to maximize the net environmental benefit of cleanup actions.

The professionals at Endpoint Solutions have been practicing Sustainable Remediation for nearly 10 years as a common sense approach to remediation as a way to lessen the burden on the environment and to reduce the overall costs of remediation.



STORM WATER MANAGEMENT SERVICES

Endpoint Solutions offers a wide variety of storm water management services. Our comprehensive consulting services include; watershed and drainage analysis; infrastructure design; comprehensive storm water management planning; green infrastructure planning and design; storm water pollution prevention planning (SWPPP); NPDES permitting services; floodplain analysis and management; storm water utility development and implementation; storm water monitoring services; water quality best management practices modeling, design and implementation; and expert witness services.

Our focus on storm water management is based upon providing the client with the most cost effective solution that will attain the level of service that meets and exceeds our client's expectations. We consider both traditional and non-traditional storm water solutions that will "fit" within the project site or watershed.

FOR MORE INFORMATION

To learn more about the services offered by Endpoint Solutions, visit: www.endpointcorporation.com

If you have any questions or would like to discuss your specific needs, please email info@endpointcorporation.com or contact us at the numbers listed below.

STORM WATER EXPERTISE

By combining our expertise in environment, engineering and infrastructure, Endpoint Solutions creates a powerful continuity of services from the planning stages all the way through implementation.

- Hydrologic and Hydraulic Modeling
- Water Quality Management, Modeling and Design
- Stream Restoration and Realignment Design and Permitting
- Storm Water Pollution Prevention Plans
- NPDES and Clean Water Act Consultations and Permitting
- Floodplain Analysis and Management
- Expert Witness Services
- Green Infrastructure Planning, Design and Implementation
- Storm Water Facility and Flood Control Grant Applications and Administration
- Construction Site Erosion Control Planning, Design and Inspection



SPCC COMPLIANCE SERVICES

Oil spills and releases endanger public health, impact drinking water, devastate natural resources, and disrupt the economy. In the United States we use large quantities of oils to heat our homes, provide fuel for automobiles, and operate various pieces of equipment for manufacturing and commerce. During storage, transport, or as the result of production activities, oil and oil-based products are sometimes spilled onto the land or into navigable waterways. When this occurs, human health and environmental quality are put at risk. Every effort must then be made to prevent oil spills and to clean them up promptly once they occur. The costs associated with implementing an Spill Prevention Control & Countermeasure (SPCC) Plan and spill prevention measures are often much less than the costs associated with emergency spill clean up, notices of violation, monetary fines, and other civil liabilities. As the old adage states, “an ounce of prevention is worth a pound of cure.”

FOR MORE INFORMATION

To learn more about the services offered by Endpoint Solutions, visit: www.endpointcorporation.com

If you have any questions or would like to discuss your specific needs, please email info@endpointcorporation.com or contact us at the numbers listed below.

DOES YOUR FACILITY:

- Store, process, refine, use or consume oils for non-transportation-related purposes?
- Have 1,320 aggregate gallons or more of oils stored in containers of 55 gallons or greater onsite?
- Have 42,000 gallons or more of oils stored underground onsite?
- Use oil of any type and in any form, including, but not limited to: petroleum; fuel oil; sludge; oil refuse; oil mixed with wastes other than dredged spoil; fats, oils or greases of animal, fish, or marine mammal origin; vegetable oils, including oil from seeds, nuts, fruits, or kernels; and other oils and greases, including synthetic oils and mineral oils onsite?
- Have a river, lake, creek, stream, storm sewer, drainage ditch or storm water retention pond located nearby?

If the answer to any of these questions is “YES”, then you may need an SPCC Plan. Endpoint consultants and engineers are experienced with the preparation and implementation of SPCC Plans compliance with 40 CFR Part 112.



WHAT IS SUSTAINABILITY?

The United States Environmental Protection Agency (USEPA) defines sustainable activities as those meeting the needs of the present without compromising the need of future generations, while minimizing overall burdens to society. However, sustainability means different things to different businesses. For some, it means developing a program because "it is the right thing to do." For others, it may increase their brand recognition or help them gain market share against a strong competitor. Some see sustainability as a tool to achieve cost savings through better performance, continuous improvement, saving on energy costs and adding money to the bottom line. Whatever your reason may be, Endpoint Solutions has the experts and the tools to meet your needs.

Endpoint Solutions' professionals evaluate sustainable considerations for each of their project endeavors. This common sense approach not only lessens the burden on the environment, but can also reduce overall costs of our projects.

FOR MORE INFORMATION

To learn more about the services offered by Endpoint Solutions, visit: www.endpointcorporation.com

If you have any questions or would like to discuss your specific needs, please email info@endpointcorporation.com or contact us at the numbers listed below.

SUSTAINABILITY SERVICES

Endpoint Solutions works with your company to define what sustainability means to you, determine your current baseline, and facilitate development of a program that meets your overall goals. Our initial assessment tool is used to gauge your awareness of sustainable business practices in terms of environmental, social and economic considerations. Our environmental, health and safety advisors and environmental scientists have expertise in manufacturing that enables them to understand your concerns and guide you towards developing a profitable and sustainable workplace. Environmental advisory services include green manufacturing practices, pollution prevention, environmental management system development, greenhouse gas emissions and energy conservation practices such as:

- Sustainability baseline assessment
- Corporate sustainability strategy
- Management system development and implementation (ISO 14001, OH-SAS 18001)
- Management system audits (internal or 3rd party)
- Corporate greenhouse gas protocol/program planning and development
- Greenhouse gas emission inventory



EXPERIENCE MATTERS

Endpoint Solutions' staff has over 20 years of international manufacturing environmental, health and safety experience, and have trained employees throughout the world. Endpoint's trainers can help evaluate existing training methods and programs, make recommendations for improvement, and conduct effective, engaging and useful training sessions.

Training sessions can be conducted at your facility to minimize employee downtime for any sized group.

One of the best methods to increase worker productivity and reduce operating costs is to provide proper training for employees. In many instances, training is required by environmental or safety regulations, and the lack of proper training or even the lack of training documentation is a finable offense.

FOR MORE INFORMATION

To learn more about the services offered by Endpoint Solutions, visit: www.endpointcorporation.com

If you have any questions or would like to discuss your specific needs, please email info@endpointcorporation.com or contact us at the numbers listed below.

ENDPOINT'S TRAINING TOPICS

Endpoint provides training on a variety of topics to keep companies in compliance and workers safe including, but not limited to:

- Anhydrous Ammonia Awareness
- Asbestos Awareness
- Bloodborne Pathogens
- CDL Driver Test
- Chemical Safety Awareness
- Confined Space
- Container Labeling
- DOT Driver Training and Refresher
- DOT Hazardous Materials
- DOT Security Awareness
- Emergency Action/Fire Prevention Plan
- Environmental Overview
- Fire Extinguisher Selection and Use
- Forklift Operator
- Hazard Communication
- Ladder Safety
- Lead in Construction Industry
- Lockout/Tagout
- Mobile Elevated Work Platform
- OSHA HAZWOPER
- Personal Protective Equipment
- RCRA Hazardous Waste
- Respiratory Protection



WATER RESOURCES SERVICES

- Hydrologic and Hydraulic Modeling of Collection Systems
- Non-Point Source Pollution Modeling
- Modeling Effectiveness of Storm Water BMPs
- Storm Water Pollution Prevention Plans
- Municipal and Industrial NPDES Permitting
- Watershed/TMDL Permitting
- Planning and Implementation of Storm Water Utilities
- Floodplain Analysis and Management
- Green Infrastructure Planning, Design and Implementation
- Storm water Facility and Flood Control Grant Applications and Administration
- Construction Site Erosion Control Planning, Design and Inspection

FOR MORE INFORMATION

To learn more about the services offered by Endpoint Solutions, visit: www.endpointcorporation.com

If you have any questions or would like to discuss your specific needs, please email info@endpointcorporation.com or contact us at the numbers listed below.

EXPERIENCE MATTERS

Endpoint offers a full range of services to plan, engineer, permit, construct, operate, and maintain storm water and water resources projects. Our staff's experience has taken them to communities coast to coast where they solved problems ranging from alleviating localized drainage problems to the preparation of regional storm water management plans to reduce CSOs, comply with the requirements of NPDES regulations or TMDLs.

We are able to effectively connect the dots between standard engineering investigations and emerging technologies to target resources that cost effectively solve problems that have eluded others. Our staff specializes in developing storm water BMPs that fit the complexity and constraints of urban settings.

Funding is the driver for all storm water programs. Our staff is recognized nationally for their work in developing comprehensive financing strategies. Storm water utility user fees form the umbrella funding mechanisms that is then supplemented by other revenue sources to shift the cost of storm water so that customers pay for only the services that are required to collect, convey, treat and dispose of their storm water runoff.

Endpoint prides itself at listening to our client's needs and then following through with solutions that can include serving as the general contractor for the construction and operation of the storm water infrastructure system.

APPENDIX B

KEY PERSONNEL RESUMES

Robert A. Cigale, P.G.

Kirk L. Kapfhammer, P.G.

Mark J.K. Penzkover, P.E.

Wade C. Wollermann, P.E.

Joseph E. Mentzer, P.E.

Mindy R. Ochs, P.E.

Marie M. Venne, P.E.

Gary A. Fahl

Dave E. Neste

Timothy C. Petrick

Nick W. Draskovich

Alex J. Mentzer

Sarah Q. Ehlinger





PROFESSIONAL REGISTRATION

Licensed Professional Geologist (PG);
Wisconsin (#332), Illinois (#295)

Wisconsin Certified Asbestos Inspector #AII-129720

PECFA Consultant #41748 - Wisconsin

EMPLOYMENT HISTORY

Endpoint Solutions Corp., *Principal/Shareholder, 2008-Present*

ELM Consulting LLC, *Senior Consultant, 2004-2008*

URS Corporation, *Project Manager/Geologist, 1989-2004*

EDUCATION

Milwaukee School of Engineering: MS
Environmental Engineering - 2000

University of Wisconsin-Madison: BS
Geology/Geophysics - 1987

SUMMARY

Mr. Cigale brings over 26 years of diversified environmental consulting experience to Endpoint Solutions. Bob is the President of Endpoint and a licensed Professional Geologist in Wisconsin and Illinois. Mr. Cigale's areas of expertise include: Phase I and Phase II Environmental Site Assessments (ESAs), designing and managing subsurface investigations at Brownfield redevelopment sites, evaluating, planning, designing and implementing innovative, end-focused remedial plans and assisting developers through the regulatory process for redevelopment of contaminated sites. Mr. Cigale's client base includes chemical manufacturers, municipalities, real estate developers and brokers, attorneys, redevelopment authorities, lenders and business brokers.

REPRESENTATIVE PROJECT EXPERIENCE

Brief descriptions of representative projects that Mr. Cigale has been involved with are presented below.

Project Geologist: Former Iceport Site, Cudahy, Wisconsin. Assisted with preparation of a Ready for Reuse Grant application, completed a Phase I ESA, planned and implemented a site investigation, prepared a Remedial Action Options Report (RAOR) and prepared a Remedial Action Plan (RAP). Assisted the City with stakeholder outreach and frequently briefed Common Council and Community Development Authority on project status. Obtained approval from WDNR for an innovative RAP which saved the City of Cudahy approximately \$1 million in soil disposal fees. Successfully moved the site towards closure and redevelopment after 20 years of work by other consultants.

Project Manager: Numerous Phase I and Phase II Environmental Site Assessments (ESAs) in support of property transactions throughout the Upper Midwest. Phase I and Phase II ESAs were performed on undeveloped sites, residential developments, commercial developments, industrial sites and sites with historically known contamination.

Project Manager: Innovative Site Investigation and RAOR, The Kettle, Eagle, Wisconsin. Designed and implemented a Laser-Induced Fluorescence (LIF) survey to delineate the extent of free-phase petroleum product in the subsurface at an active gasoline

retail site. Applied the American Petroleum Institute's LNAPL Distribution and Recovery Model (LDRM) to identify the volume of recoverable free product. Prepared a RAOR for the site which identified vacuum-enhanced extraction as the technology most likely to successfully remove the most petroleum free product from the subsurface.

Project Manager: Pre-development assistance for construction on open and closed contaminated sites. Worked directly with municipalities, property developers and the Wisconsin Department of Natural Resources (WDNR) to evaluate contaminated sites for future development, assisting the municipality and the developer to quickly and efficiently file the required plans in order for the WDNR to approve the new development. Plans include: Applications for Exemption to Construct on Historic Fill Sites; NR 718 Soil Management Plans; Water Management Plans; Barrier Maintenance Plans; and, updated GIS Registries.

Project Geologist: Site Investigation and Long Term Monitoring, Fort McCoy, Wisconsin. Mr. Cigale served as the Project Geologist and oversaw the quarterly groundwater sampling, monitoring and analysis at seven areas within the 60,000 acre Fort McCoy installation. All groundwater monitoring was performed utilizing EPA approved low flow sampling techniques. In addition, Mr. Cigale was the Project Geologist for subsurface soil and groundwater investigations at three (3) locations within the installation related to former incinerator waste disposal operations.

Project Manager: Long-Term Groundwater Monitoring and General Environmental Services, Confidential Client, Wisconsin. Mr. Cigale has managed the long-term groundwater extraction system operation, maintenance and monitoring at the facility of the past 12 years. Specific tasks have included groundwater sampling and reporting, including WDNR EDD, AFSCI reporting and WPDES sampling and reporting.

Project Manager: Pre-demolition asbestos containing materials (ACM) and lead-based paint (LBP) assessment of buildings. Worked with municipalities, local governments and private developers to efficiently assess structures planned for demolition. In many cases, Mr. Cigale also prepared project specifications and bidding documents for abatement contractors.

Project Manager: Site Investigation, Demolition and Remediation, Former Frost Manufacturing Facility, Kenosha, Wisconsin. Designed, managed and performed the site investigation, building demolition and remediation of the former metal working and plating operation. This work was performed with funding provided by the WDNR with a Brownfields remediation grant. This project also included sustainable remediation practices where the excavation spoils from another City-owned project were utilized as backfill during the remediation resulting in the savings of approximately \$200,000 in City and State funding.



PROFESSIONAL REGISTRATION

Licensed Professional Geologist (PG);
Wisconsin, Texas (former).

PECFA Consultant 41583

UST Site Assessor

Asbestos Supervisor

EMPLOYMENT HISTORY

ELM Consulting, LLC, *Senior Consultant*, 2004 - 2008

URS Corporation, *Project Manager/
Geologist*, 1992 - 2004

EDUCATION

University of Wisconsin-Madison: *BS
Geology* - 1992

University of Wisconsin-Madison:
Certificate of Environmental Studies -
1992

SUMMARY

Mr. Kapfhammer's experience includes over 20 years of diversified professional environmental consulting actions. Kirk is currently a licensed Professional Geologist in Wisconsin and formerly in Texas, and his areas of expertise include: environmental project management, Phase I and Phase II Environmental Assessments, Brownfield redevelopment, remedial action evaluation and implementation, third party liability transfer evaluations, regulatory compliance planning and audits, safety and environmental planning, environmental due diligence and international project management. Mr. Kapfhammer's client base includes lenders, manufacturers, attorneys, redevelopment authorities, municipalities, real estate developers and utilities.

RELEVANT PROJECT EXPERIENCE

Project Manager: Environmental Compliance, Regulatory Liaison, Site Investigation & Remediation, confidential manufacturer, Wisconsin, Georgia and Canada. Served as Environmental Coordinator for a large manufacturing corporation. Completed multiple site acquisition due diligence activities including investigative and remedial actions. Responsibilities also included ensuring compliance at fifteen facilities in the United States and Canada. Project activities included the preparation and filing of local, state and federal compliance reports for air, waste and water discharges. Also served as the company liaison with vendors, customers, regulatory agencies and corporate personnel. Continue to provide support services on an as needed basis.

Project Manager: Subsurface Investigation and Remediation, confidential client, Oshkosh, Wisconsin. Implemented subsurface investigation and remediation related to a former tank farm for petroleum and chemical products. Impacts of concern included a variety of petroleum compounds, chlorinated solvents and pentachlorophenol. Soils and groundwater impacts remediated through implementation of air/ozone sparging and extraction.

Project Manager: Site Investigation and Remediation, Danville, Pennsylvania. Conducted remedial investigations, feasibility studies and risk assessments of a large industrial setting with hazardous waste impacts to facilitate sale and redevelopment of the site. Media of concern included soils, groundwater, surface

water, and sediment addressing constituents of concern including VOCs, PNAs and metals.

Project Manager: Site Assessment, Remediation and Monitoring, Borough of Stanhope, New Jersey. Conducted remedial investigations, feasibility studies and ecological evaluations of a large industrial setting with soil and groundwater impacts, including impacts to groundwater which have also affected a local potable water supply source. Constituents of concern include VOCs, PNAs and metals.

Project Geologist: Environmental Services Cooperative Agreement Site Characterization, Lone Star Army Ammunition Plant and Red River Army Depot, Texarkana, Texas. Developed and implemented a multi-million dollar pre-Early Transfer site characterization completed in less than 12 months. Responsibilities included developing and implementation of project planning documents: Field Sampling Plans (FSP); Project Management Plans (PMP); Quality Assurance Project Plans (QAPP); and Project Schedule, negotiating work plans with regulators, managing scope, schedule and budget of multiple sub-contractors and evaluating data and drafting reports.

Project Manager: Due Diligence Projects, numerous locations. Performed and managed Phase I and II Environmental Site Assessments and due diligence environmental and OSHA compliance audits for clients acquiring the operations and assets of a variety of manufacturing facilities in the United States, Canada, Mexico, Europe and South America. Specializing in multiple site location projects.

Project Manager: Site Investigation and Remediation, Cudahy, Wisconsin. Conducted a remedial investigation, feasibility study, and remediation of a large industrial setting with a hazardous waste impacted wetland. Media of concern included soils, groundwater, surface water, and sediment addressing constituents of concern including VOCs, PNAs, PCBs and metals.

Project Coordinator: Site Investigation and Remediation, Marinette, Wisconsin. Prepared and implemented a RCRA facility investigation work plan and remediation at a former herbicide manufacturing facility located alongside a riverway flowing into Lake Michigan. Coordinated investigation and remedial planning with local, state and federal regulatory agencies. Work included the investigation and remediation of soils, sediments, surface water and groundwater impacted with arsenic and a variety of other organic compounds.

Project Consultant: Insured Fixed Cost Remediation, Former MacWhyte Wire Rope Manufacturing Facility, Kenosha, Wisconsin. Assisted in development and implementation of remedial actions at this Brownfield site insured with a remedial cost cap policy by AIG. Responsibilities included development of long-term monitoring program, subcontractor management and evaluation of monitoring data and trends. Contaminants of concern included solvents, petroleum products and metals. Remedial methods included excavation and disposal, ex-situ chemical oxidation and natural attenuation.



PROFESSIONAL REGISTRATION

Licensed Professional Engineer (PE) – Wisconsin

State of Wisconsin Licensed Underground Tank System Installer

PECFA Consultant 1087706

EMPLOYMENT HISTORY

ELM Consulting, LLC, *Senior Engineer/Project Manager, 2004 – 2008*

URS Corporation, *Senior Engineer/Project Manager, 2000 – 2004*

Superior Special Services, *Senior Engineer/Operations Manager, 1999 – 2000*

U.S. Oil Co., Inc, *Divisional Operations Manager, 1992 – 1999*

Miller Engineers & Scientists, *Staff Engineer, 1990 – 1992*

EDUCATION

Purdue University: BS Civil Engineering - 1989

University of Wisconsin-Oshkosh: Masters of Business Administration - 2004

SUMMARY

Mr. Penzkover is a Senior Engineer/Project Manager, responsible for the management of large-scale civil and environmental remediation projects. He is also involved with the evaluation, design, specification, and implementation of innovative remedial technologies. His 23 years of experience also includes third-party liability transfer projects, remedial investigations, design of traditional remedial systems, permitting, and construction project management on a wide range of civil and environmental engineering projects throughout the Midwest.

RELEVANT PROJECT EXPERIENCE

The following are a selection of projects Mr. Penzkover has managed.

Project Manager: Wisconsin Public Service Facilities, Wisconsin. Starting in 2010 and continuing into 2011, Mark managed the fuel transfer, tank and liner inspection, upgrade (piping and tank), and API 653 re-certification of seven large aboveground storage tanks (petroleum) at three WPS power generation plant facilities. Since these tanks are used for producing power during peak demand, the project had to be planned and implemented in a specific sequence and on a very tight time frame. Three of the tanks required extensive repair and upgrade activities included installation of corrosion protection systems (sacrificial anodes) installed under the tank floors and isolator bushing installed on all connected piping.

Project Manager: U.S. Venture, Inc. Bulk Terminals, Wisconsin. Mark manages numerous environmental and tank management projects and also provides engineering design and regulatory compliance assistance at U.S. Venture's eleven (11) bulk petroleum terminals throughout Wisconsin. Projects include tank design, inspections and upgrades; SPCC preparation; permitting and regulatory interaction; and subsurface investigation and environmental remediation.

Project Manager: Former MacWhyte Facility, Kenosha, Wisconsin. Demolition and remediation of this 100-year old, 27-acre wire rope manufacturing facility was performed as a third-party liability transfer project (\$5.4 M firm-fixed pricing). Mark managed the demolition of 57 buildings, active remediation of 33 impacted areas, and site grading and restoration in preparation for

re-use as a city park and/or possible residential redevelopment.

Project Manager: Former Maine Electronics, Inc. Facility, Lisbon, Maine. Remediation of this 20-acre circuit board manufacturing facility was conducted in phases (\$6.0 M firm-fixed pricing). Mark managed the construction of a new building to house the existing remediation system and controls; dredging of metal-impacted sediments from the nearby Sabattus River; remedial engineering; demolition of the former plant building; excavation and ex-situ treatment (chemical oxidation) of VOC-impacted soils from the vicinity of the former building; and bench-scale testing for treatment of the arsenic and VOC-impacted groundwater plumes.

Project Manager: Kinder Morgan Liquids Terminals, Chicago, Illinois. Managed a multi-million dollar design-build remediation project at a very large petro-chemical terminal in the Chicago area. Remedial action activities were performed at 22 separate active locations within the terminal and the adjacent canal over a three year period. To avoid disruption to terminal operations and reduce total life-cycle costs, no long-term remediation systems were installed. Remedial technologies applied to the various petroleum and chemical subsurface impacts included: in-situ chemical oxidation, engineered barrier installation, stabilization, capping, source removal/treatment, free product recovery, and excavation.

Project Manager: Confidential Chemical Manufacturer, Milwaukee, Wisconsin. A treatment performance evaluation indicated that an existing vacuum extraction system and groundwater recovery system were no longer effective in removing weathered petroleum hydrocarbons and solvents at the site. A chemical oxidation bench-scale test was performed to identify the most effective chemical oxidant. Following the bench study, a pilot-scale test was performed at the site using a proprietary "cold" chemical oxidant. Based on the results of the pilot test, a full-scale chemical oxidation remedial design was developed and implemented. Significant reductions in contaminant levels were noted within weeks, and site closure was obtained from the WDNR within one year.

Project Manager: Confidential Plating Manufacturer, Grand Rapids, Michigan. Managed a multi-million dollar design-build remediation project at an active plating manufacturing facility. Bench and pilot scale studies were conducted on impacted (chromium) soil and groundwater. The unused plating line was segregated from the active manufacturing area, and then decontamination and decommissioning activities were performed. Ex-situ remedial activities included removing a section of the plant floor and excavating accessible heavily impacted source soils. The remaining inaccessible vadose zone source materials were treated in-situ by injecting a stabilizing agent in selected areas under the plant floor. The groundwater plume was treated in-situ by a combination of pH neutralization and injection of Zero Valent Iron media into the formation. The application of innovative in-situ technologies eliminated the need to install an expensive, long-term remediation system; saved the client significant life cycle costs; and allowed valuable manufacturing floor space to be returned to productivity. After 24 months of monitoring, a No Further Action letter was received from MDEQ.



PROFESSIONAL REGISTRATION

Licensed Professional Engineer (PE);
Wisconsin, Illinois, Indiana, Missouri

PECFA Consultant 1091833

Wisconsin Aboveground Storage Tank
Installer

Wisconsin Underground Storage Tank
Installer

Steel Tank Institute SP001 Above-
ground Storage Tank Inspector

EMPLOYMENT HISTORY

ELM Consulting, LLC, *Technical Con-
sultant, 2004-2008*

URS Corporation, *Associate Engineer,
2001-2004*

Kaempfer & Associates, *Engineering
Aide III & IV, 1999-2000*

EDUCATION

Michigan Technological University: BS
Environmental Engineering – 2001

SUMMARY

Mr. Wollermann is a registered Professional Engineer in Wisconsin, Illinois and Indiana and has over 14 years experience in civil and environmental engineering and construction management. His expertise includes design and construction of industrial water/wastewater systems, sanitary sewer evaluation studies, sanitary and storm water collection systems, and groundwater remediation systems. His work has included treatment system optimization investigations, operations and maintenance of privatized utilities, preparation of project drawings and specifications, investigative and monitoring sampling, construction oversight, surveying, and reporting.

REPRESENTATIVE PROJECT EXPERIENCE

Project Manager: Chemical Facility Design, EMCO Chemical Distributors, Pleasant Prairie, Wisconsin. Designed, permitted and performed construction management activities for a new chemical storage, blending, packaging and distribution facility for the client. Chemical storage tank system included over 69 ASTs ranging up to 46,000 gallons in capacity, 16 mixing vessels, rail and tanker loading and unloading facilities, tanker and tote cleaning and over 70,000 feet of process piping. Responsibility included management of design personnel, interaction with State regulators for permitting including air and tank system permits, review of federal, state and local code to ensure code compliance of design, drawing and bid specification preparation and solicitation, review and management of bids and procurement assistance, construction oversight and technical assistance. Project budget for the system's installation was approximately \$10M.

Project Manager: Brownfield Remediation, Former Iceport Property, Cudahy, Wisconsin. Assisted the City of Cudahy with the procurement and implementation of a WDNR Ready for Re-use Grant for the investigation, remediation and restoration of a 31 acre brownfield property. Performed the historical documentation review and data gap analysis for the environmental investigation history at the Site. Prepared grant application documents and assisted the City secure more than \$450,000 in grant funding. Upon award of the grants, prepared construction design and specifications for grading and installation of a soil exposure barrier to mitigate direct contact concerns at the Site. Construction permitting included obtaining WDNR and

Army Corps. approval for work impacting a wetland, storm water permitting, and erosion control plans. Assisted the City with preparation of grant-required public record documentation and public outreach activities. Completed the barrier construction and restoration activities and chemical oxidation injection remedial activities and obtained final regulatory closure for the Site with WDNR. Assisted the City and developer with the WDNR Exemption Application for Development at a Historic Fill Site so a new commercial bakery could be built at the Site.

Project Manager: Asbestos, Hazardous Materials and Infection Control Testing & Monitoring, Clement J. Zablocki VA Medical Center (VAMC), Milwaukee, Wisconsin. Managed work under VA IDIQ contract (VA69D-P-1673) at the VAMC including inspection, testing and monitoring services for a wide range of construction and environmental projects at the hospital. Projects included demolition, renovation/remodeling and new construction of patient, research and administrative areas at the VAMC and individual projects are coordinated through multiple VA project managers and engineers. The Contract was a one (1) year base term with four (4) option years. The Contract was extended to its full capacity of \$500K by the VA based on the high quality of the services provided.

Project Engineer: Environmental Program Management, Red River Army Depot and Lone Star Army Ammunition Plant, Texarkana, Texas. The client, the Red River Redevelopment Authority (RRRA) was working with the U.S. Army to facilitate the Early Transfer of the BRAC 2005 portions of RRAD and LSAAP. Responsibilities included the development of characterization work plans, sampling and analysis plans, health and safety plans, quality assurance project plans, and negotiation with the Army and TCEQ. Was responsible for planning, mobilization, and management of sampling efforts as well as development of the characterization reports.

Project Engineer: Former MacWhyte Facility Demolition and Remediation, Construction and Engineering Support, Kenosha, Wisconsin. The facility was a former wire rope manufacturer and included 57 buildings over 27 acres. The project was a third-party liability transfer with \$5.4M firm fixed pricing. The project scope included the demolition of the site structures, remediation of metals, VOC, and SVOC contaminated soils and restoration of the site in preparation for re-use as a city park or possible residential development. Responsibilities included development of specifications, plans and bidding documents for demolition, remediation, and restoration, contractor oversight and development of construction/remediation documentation reports.

Project Engineer: Utility Operation and Maintenance, Red River Army Depot and Lone Star Army Ammunition Plant, Texas. Provided all engineering support for the operation and maintenance of the drinking water (3.0 MGD), wastewater (3.0 MGD) and industrial wastewater (1.5 MGD) facilities on site. Responsibilities include health and safety plan development, treatment equipment inventory, updating facility drawings, engineering design services, and waste disposal, as well as personnel management and cost tracking. Engineering duties included planning for replacement of the outdated treatment plants. The water plant was evaluated for replacement using state of the art membrane technologies. Oversaw pilot testing of membrane suppliers. Overall project value was \$93MM over 20 years plus an additional \$20MM in capital upgrade allowances.



PROFESSIONAL REGISTRATION

Licensed Professional Engineer (PE) – Wisconsin

Steel Tank Institute Above Ground Tank Inspector (#AST 30706)

State of Wisconsin Licensed Above-ground Tank System Installer, Underground Tank System Installer, Tank System Inspector (credential # 41485)

American Petroleum Institute API-570 Piping Inspector

EMPLOYMENT HISTORY

Northern Environmental /Bonestroo, *Senior Registered Engineer/Project Manager, 1990 – 2010*

Rexworks Inc., *Field Service Representative, 1987 – 1990*

EDUCATION

University of Wisconsin, Madison: *BS Mining Engineering - 1986*

SUMMARY

Mr. Mentzer is a Senior Engineer/Project Manager, responsible for the management of projects involving the storage, handling, and processing of regulated chemicals, including flammable and combustible liquids, hazardous chemicals, compressed gases and regulated solids. His 24 years of experience also includes inspection, design, recertification of existing equipment, negotiation with regulatory agencies, facility planning and design, construction oversight, updating client designs to meet current requirements, inspections of facilities and equipment prior to acquisition, and assisting client in resolving regulatory compliance issues.

REPRESENTATIVE PROJECT EXPERIENCE

The following are a selection of projects Mr. Mentzer has managed.

Project Manager/Project Engineer: U.S. Oil Co., Inc., various locations. Ongoing work assisting long-term petro-chemical client in upgrading and maintaining facilities throughout the Midwest to state and federal standards. Work includes Spill Prevention Control and Countermeasures (SPCC) compliance evaluation and plan preparation, inspection and recertification of storage vessels, review of proposed facility plans, design of containment systems for storage systems and product loading including ethanol, biodiesel and other fuel related products.

Project Manager/Project Engineer: Confidential printing manufacturer, Wisconsin. Assisted client in implementing in-house design of alcohol storage, distribution, and recovery and distillation system at short-run printing facility. Work included updating initial client design to meet code, inspecting reused equipment, overseeing repairs, overseeing system installation, providing needed approvals for unlisted equipment, and assisting client to address production changes and system modifications.

Project Manager/Project Engineer: Benz Oil Company, Milwaukee, Wisconsin. Assisted in the design and construction of multiple-compartment chemical storage system in the City of Milwaukee. The facility was placed on newly acquired property with a history of petroleum distribution that had residual contamination. The new chemical storage system and equipment was designed to connect with existing infrastructure while meeting current and proposed State and Federal regulations. Construction

was carefully managed to limit expense associated with handling and disposal of contaminated soil.

Project Manager: Petron Inc., New Berlin, Wisconsin. Assisted in the design and construction of an expanded chemical storage and process area for a specialty lubricant manufacturer. Work included evaluation of existing storage systems, design of new storage and blending area, implementation of design, procurement of necessary permits, management of contaminated soil found during construction activities, and completion of facility SPCC plan.

Project Engineer: Fontarome Chemical, St Francis, Wisconsin. Assisted client (pharmaceutical and specialty food product producer) with installation of second-hand pressure reaction vessel acquired from out-of-state supplier, completed the design and permitting, and managed the installation of a central solvent bulk storage tank and distribution system to minimize handling of solvent (listed hazardous material).

Project Engineer: Northern Labs Inc, Manitowoc, Wisconsin. Assisted the client (pharmaceutical manufacturer) and mechanical contractor in the design and construction a new raw materials storage facility. Work included reviewing initial system design, updating design to current code, obtaining necessary permits, inspecting and recertifying storage tanks from other facilities for reuse, and designing tank and off-load containment systems.

Project Manager/Project Engineer: Integrys/Wisconsin Public Service, multiple facilities in Wisconsin. Inspected a significant portion of the chemical and petroleum storage systems at Wisconsin facilities to establish compliance with new State Requirements. Prepared reports that summarized needed upgrades to comply with the new and existing requirements. Prepared budgets for anticipated changes so costs could be planned and budgeted. Assisted in negotiations with regulatory agencies to allow alternative solutions to issues found.

Project Manager/Project Engineer: Quad/Graphics, Lomira Wisconsin. Client has Process Safety management program for solvent system used for printing. Audited existing Process Safety Management program for client, identified deficiencies and recommended actions client needed to take to address findings. Created tracking system to allow the client to assign responsibility for resolving findings and record findings for future verification.

Project Manager/ Project Engineer: Ohly Ingredients, Hutchinson Minnesota. Client had a consultant prepared Process Safety Management Program (PSM)/Risk Management Program (RMP) that did not integrate with facility operations. The facility had several operational protocols to meet internal and external documentation needs that were similar to PSM programs but were recorded separately creating duplicate records. Prepared a new PSM program that integrated the clients existing procedures into PSM program to replace the existing stand alone PSM requirements. Existing programs were reviewed and shortcomings identified and addressed so that they would satisfy PSM/RMP, internal and external requirements.



PROFESSIONAL REGISTRATION

Licensed Professional Engineer —
State of Wisconsin

EMPLOYMENT HISTORY

Graymont/ Western Lime (2003-2013)

- *Director Health, Safety and Environmental Systems and Audits*
- *HSE Regional Manager - Great Lakes Region,*
- *Environmental & Regulatory Director*

em2, Inc., Fond du Lac, WI (2002-2005) - *Owner*

Fond du Lac County Code Enforcement Office, (2001-2003) - *Non-Metallic Mining Reclamation Specialist*

Superior Special Services, Inc., Fond du Lac, WI (1998-2001) - *Project Engineer*

Golder Construction Services, Inc., Redmond, WA, (1995-1997) - *Engineering Technician*

Accomplished leader with over 17 years of experience in the Environmental, Health and Safety field. Strong drive for continuous improvement, developing effective and efficient programs and utilizing strategic thinking to improve performance and reduce costs for her clients.

PROJECT EXPERIENCE

Responsible for ensuring that world class standards are achieved across a multi-national company in terms of safety, environmental performance, sustainable development, community relations and value creation for all stakeholders.

Led the development, implementation and maintenance of a cost effective company-wide health, safety and environmental management system and auditing program. Benchmarked the company's sustainable development, environmental and safety programs against best in class organizations and developing strategic approaches for continuous improvement.

Led a cross functional safety task force to develop and implement a companywide safety action plan including new safety standards, knowledge sharing and collaboration, employee empowerment and risk assessment. As Task Force leader, was responsible for ensuring the engagement and buy-in of various stakeholder groups.

Prepared annual Sustainability Reports, periodic reports for the executive staff, Board of Directors and other stakeholders and presenting progress on key projects and initiatives.

Member of the executive management team, responsible for driving continuous improvement in the environmental and safety performance at 3 lime manufacturing plants and 7 quarries in WI and MI. Responsibilities included continuous improvement initiatives, safety process direction and oversight, permitting, HSE Management System development and implementation, regulatory negotiations and permitting, training, auditing and benchmarking.

Extensive experience with Air Permitting and Compliance, Storm Water, SPCC, Zoning, Mine Reclamation, Mine Safety and Health Administration Regulations (MSHA) and Waste Regulations.

Developed and implemented an Environmental Management System, working closely with the operations staff to improve

PROFESSIONAL AFFILIATIONS

Board of Directors - Aggregate Producers of Wisconsin (Jan 2010 to Dec 2012)

Board of Directors - Federation of Environmental Technologists (June 2011 to June 2013)

Chairman - National Lime Association's Environmental Committee (2006 to 2009)

Active member - National Lime Association (2003 to 2013)

Member - National Lime Association's Health and Safety Committee (2003 to 2013)

Secretary - SE Chapter Federation of Environmental Technologists, Milwaukee, WI (FY 2008 to 2011)

Member - Conference Planning Committee - Federation of Environmental Technologists (2008 to 2013)

EDUCATION

Executive MBA, University of Wisconsin Milwaukee (2011)

BS in Environmental Engineering (2000 — Cum Laude), Michigan Technological University, Houghton, MI

overall environmental performance, reduce liability and garner employee buy-in and support.

Spearheaded a safety initiative to replace the safety program with a culture based safety process. Initiatives included employee driven safety process teams, interactive training approaches, improved communication, employee safety performance reviews and safety process performance surveys. Decreased reportable injuries by 82% in eight years.

Developed key performance indicators for the environmental and safety processes, implemented ongoing performance analysis and routine methods of communicating goals, performance and opportunities for improvement to the employees. "What gets measured gets done"

Worked closely with numerous trade groups at the state and federal level to promote the lime and aggregates industry, influence environmental and safety policy and educate regulators and lawmakers about the needs and abilities of the industry.

Provided engineering consulting services to clients in the non-metallic mining industry. Developed non-metallic mining reclamation plans for numerous clients throughout the state, focusing on reducing the costs of reclamation and financial assurance. Interacted with regulators on behalf of clients to ensure a swift and trouble-free approval of facility plans.

Developed and implemented the non-metallic mining reclamation program pursuant to WI Administrative Code. Program was used as a model by DNR for first regional audit resulting in high scores.

As a Project Engineer, provided engineering services for clients, encompassing contaminated sediment dredging and wastewater treatment, marine construction, and hydrographic surveying. Responsible for all aspects of project management including client interaction, design, marketing, proposals, safe work practices, project coordination and field work.

Provided engineering services to municipal and private industry clients. Responsible for field inspection and detailed documentation of municipal landfill excavation and construction.



PROFESSIONAL REGISTRATION

Licensed Professional Engineer (PE);
Wisconsin

Wisconsin Site Assessor Certification

Wisconsin Underground Storage Tank
Installer

Wisconsin Aboveground Storage Tank
Installer

EMPLOYMENT HISTORY

Endpoint Solutions Corp.
Senior Engineer, 2011-present

ARCADIS U.S., Inc.
Staff Engineer, 2003-2011

EDUCATION

Milwaukee School of Engineering: MS,
Environmental Engineering - Expected
graduation 2013

University of Wisconsin - Platteville:
BS, Environmental Engineering - 2003

CONTINUING EDUCATION

University of Wisconsin - Madison:
Process Hazard Analysis - 2011

PROFFESIONAL AFFILIATIONS

Wisconsin Clean Cities

SUMMARY

Ms. Venné is a registered Professional Engineer in Wisconsin with 11 years experience in civil and environmental engineering. Her expertise includes design, construction, and implementation of various innovative and cost-effective technologies for soil, groundwater and vapor intrusion scenarios. Her work has included management and coordination of subcontractors, preparation of project drawings and specifications, design, operation and maintenance (O&M) of remedial systems, investigative and monitoring sampling, construction oversight, data analysis and reporting. Relevant project experience is presented in the following sections.

REPRESENTATIVE PROJECT EXPERIENCE

Construction Manager: Direct Contact Soil Barrier Construction, City of Cudahy, Cudahy, Wisconsin. Oversaw the construction of a direct contact soil barrier for a 29-acre former industrial site in Cudahy, Wisconsin. Primary contaminants included metals and polycyclic aromatic hydrocarbons (PAHs). Construction activities included the relocation and consolidation of approximately 18,000 cubic yards (cu. yds) of impacted material stockpiled at the site, grading the property to make it more suitable for development, and the importation of approximately 70,000 cu. yds of clean soil/topsoil to construct an 18-inch clean soil direct contact barrier.

Construction Manager: Waste Consolidation and Liner Construction, Confidential Former Wood Manufacturing Facility, Kingsford, Michigan. Oversaw the construction of an impermeable cover for a 2.7-acre former waste disposal site in northern Michigan. Primary contaminants included volatile and semi-volatile organic compounds (VOCs/SVOCs), PAHs, methane, and tar/creosote. Construction activities included the consolidation of approximately 16,000 cu. yds of waste material, installation of a 60-mil high-density polyethylene liner, geocomposite drainage layer, methane-venting layer, and asphalt parking lot. Construction monitoring included confirmation soil sampling and perimeter air monitoring for particulates, VOCs, and SVOCs.

Project Engineer: Soil and Groundwater Remediation, City of Glendale, Glendale, Wisconsin. Remediation activities included the operation of a soil vapor extraction (SVE) system and injection of a carbon source in the groundwater for enhanced reductive dechlorination. The SVE system consisted of a push/pull rotary lobe blower skid (capable of simultaneously injecting air into and extracting air from the vadose zone), heat exchanger, and injection/extraction well manifold. Responsibilities included system O&M, system effluent sampling, groundwater

monitoring, data analysis and review, and reporting.

Design Engineer: Groundwater Remediation System Design, Confidential Former Wood Manufacturing Facility, Kingsford, Michigan. Design team member for a 500 gallon per minute groundwater treatment and extraction system. Primary contaminants included VOCs, SVOCs, and PAHs. Design included 45 extraction wells, a 37,600 gallon pretreatment aeration basin, two 540,000 gallon activated sludge aeration basins, three 4,000 gallon fixed film bioreactors, clarifiers, and solids storage tank for the treatment of high strength semi-volatile organic compound impacted groundwater. Responsibilities included the design and production of the site civil drawings; preparation of the O&M manual for system start-up and long-term operation.

Design Engineer: Groundwater Remediation System Design, Confidential Power Company, Hinkley, California. Design team member for three in-situ remediation systems to remove hexavalent chromium from the groundwater. Design included extraction and injection wells, carbon substrate injection systems, and associated pumps, piping, and appurtenances. Responsibilities included the design and production of the site civil and mechanical drawing packages, coordination with other design divisions, specification of equipment; bid package preparation and solicitation, review of contractor submittals and requests for information; and completion of record drawings.

Project Engineer/Task Manager: Groundwater Remediation System Operation, Confidential Manufacturing Facility, Wausau, Wisconsin. Remediation activities included the operation of two SVE systems, a groundwater extraction system, and passive product removal for comingled light non-aqueous phase liquid (LNAPL) plumes. Contaminants of concern included #2 fuel oil, #6 fuel oil, VOCs, PAHs, mineral spirits, and pentachlorophenol. Responsibilities included coordination of subcontractors and field activities, remedial system O&M, groundwater monitoring, data analysis and review, and reporting. Project budget for the system's annual operation, maintenance, and monitoring was approximately \$100,000.

Project Engineer/Task Manager: Vapor Intrusion Mitigation, Confidential Former Manufacturing Facility, Great Neck, New York. Assisted in the design and implementation of two vapor mitigation systems to address chlorinated VOCs present in the indoor air and soil gas beneath a 1 million square foot former manufacturing facility—refurbished and redeveloped as commercial business and office space. Design consisted of two active sub-slab depressurization systems (SSDSs) consisting of sub-slab extraction sumps, blowers, off-gas treatment, and associated piping, controls and appurtenances. Responsibilities included mitigation system design, drawing and bid specification preparation and solicitation, construction oversight, task management of operation, maintenance, and monitoring of the SSDSs; quarterly reporting of system O&M activities and data analysis and review. Project budget for the system's annual operation, maintenance, and monitoring was approximately \$1M.



PROFESSIONAL HISTORY

Endpoint Solutions Corp., *Senior Advisor* 2009-Present

Modine Manufacturing Company:

Vice President, Environmental, Safety & Security 2005-2008

Environmental Health & Safety Officer 1999-2005

Environmental Compliance Officer 1997-1999

Manager, Environmental Engineering 1986-1997

Supervisor, Environmental Engineering 1985-1986

Environmental Engineer 1982-1985

EDUCATION

*University of Wisconsin, Madison: BS
Climatology/Meteorology*

SUMMARY

Mr. Fahl has over 30 years of experience as an executive level decision-maker for a major manufacturing company and as an independent consultant. Gary was very successful developing, planning and implementing sustainable environmental and safety strategies in Europe, Asia and the Americas. In addition, Gary also mentored managers in the areas of Environmental Engineering, Health and Safety, Facilities Management Administrative Services, Plant Services and Security.

EXPERIENCE

- ISO 14001 and OHSAS 18001 development and implementation
- Company acquisitions and associated contractual negotiations
- Greenfield development
- Developing continuous improvement strategies for environmental & safety programs
- Global expertise in leading international teams
- Negotiating remedial soil/groundwater cleanups with State and Federal agencies
- Implementing energy conservation programs globally
- Budget and cost containment strategies
- Interpretation of international environmental requirements
- Leading group of diverse managers on an international level

NOTED ACHIEVEMENTS

Environmental, safety and security manager for a \$1.8 billion global leader of thermal management systems for on highway and off highway vehicles, heating, ventilation, industrial equipment and fuel cells with 7,900 employees at 33 facilities in 15 countries.

Led environmental, safety, security and facility management at all manufacturing facilities worldwide with an annualized budget of \$10M and an employee base of 37-102.

Developed and implemented an environmental management system based on ISO 14001 which led to all facilities worldwide ob-

PROFESSIONAL AFFILIATIONS

Manufacturing Alliance/MAPI

National Association of Environmental Management (NAM)

Wisconsin Council of Safety

National Safety Council

Racine Manufacturers Association

Racine Sustainable Business Network Group

PERSONAL DEVELOPMENT

Financial Accounting for Business

Leadership Principals for Executives

ISO 14001 Internal Auditor Course (LRQA)

OSHA Ergonomics Program

Leading Metrics for EH&S Performance

taining independent third party certification.

Initiated and led development of global greenhouse gas emission reduction plan to dovetail with existing energy conservation program.

Reduced air emissions, water usage and hazardous/non-hazardous waste generation by 10% annually by implementing innovative manufacturing and process throughout corporation.

Implemented an energy conservation program based on best management practice methodology that led to annualized savings of over \$2.0 million.

Developed global security standard including audit protocols for all manufacturing facilities resulting in safer workplace environment.

Developed and implemented "Modine Safety Star" program that is based on 18 OSHA requirements and 5 Modine Best Practices with seven plants receiving award.

Reduced recordable incident rate from greater than 12 to below 2, resulting in millions of dollars of reduced workman's compensation reserves and associated costs.

Granted inclusion on Domini Index for socially responsible companies for five consecutive years as direct result of environmental programs.

Initiated development of criteria in order to obtain certification to OHSAS 18001.

Introduced "Facility Report Card" to track condition of all facilities and provided mechanism for five-year budget plan.

Reduced number of automobiles in Company fleet by 50% by using alternative methods for employee use of vehicles. This initiative resulted in cost savings of 40% to 50%.

Served as key witness in numerous court proceedings involving contractual interpretation, environmental regulatory interpretation and various mediation proceedings.

Served on Kenosha-Racine Milwaukee Committee (KRM Initiative) with community business and political leaders to consider extension of Metra Rail from Kenosha to Milwaukee.



PROFESSIONAL REGISTRATION

State of Wisconsin Hydrogeologist

40 Hour OSHA Hazardous Site Worker Certification

EMPLOYMENT HISTORY

Engel & Associates, Inc., Fond du Lac, Wisconsin: 2003 – 2013
Engineering/Environmental Technician

ARGO Contracting Inc., Fond du Lac, Wisconsin: 2002 – 2003
Engineering Technician/CAD Drafter

EDUCATION

Montana Tech of the University of Montana: 1995—1998

University of Wisconsin – Oshkosh, Oshkosh, Wisconsin: 2012 – 2014 (Cum Laude)
B.S. – Geology (Hydrogeology)

PROJECT EXPERIENCE

Field Work:

Responsible for ensuring project work was performed in accordance with design plans, job specifications, client needs and all applicable federal, state and local regulations

Coordinated excavation and drilling contractors in conducting underground storage tank removal, test pit analysis of subsurface, sampling of subsurface soils, and installation of groundwater monitoring wells

Developed detailed project documentation including field notes, engineering drawings and written construction reports

Performed field inspections of storm water control features at active construction sites and non-metallic mining facilities. Proposed improvements based on the inspection results

Developed sampling plans, collected soil potable well water, groundwater, and surface water samples, and reviewed sample results to determine compliance with regulations, project specifications, and plans

Report Preparation:

Developed Non-Metallic Mining Reclamation plans in accordance with NR135 requirements

Prepared Phase I/Phase II Environmental Site Assessments

Wisconsin Department of Natural Resources (WDNR) Wisconsin Department of Commerce Case Closure Requests and WDNR Geographic Information System (GIS) Registration documentation

Storm Water Pollution Prevention Plans for non-metallic mining facilities

Drafting/Design:

Developed detailed site plans and maps using AutoCad, ArcView 3.1 and ArcGIS 9-10

Prepared site drawings from field and survey notes depicting site conditions, proposed features, and geologic cross sections

Designed post-reclamation maps for non-metallic mining sites in accordance with NR135



PROFESSIONAL REGISTRATION

Wisconsin Certified Site Assessor
#248917

Wisconsin Certified Asbestos Inspector
#AII-111277

Wisconsin Certified Asbestos Supervisor
#ACS-111277

EMPLOYMENT HISTORY

Endpoint Solutions Corp.,
Technical Consultant 2010 - present

RMT Inc., *Senior Technician*
1993 - 2010

Triad Engineering, Inc,
CADD Designer 1988 - 1993

Bruner Corporation,
Draftsman/Project Engineer 1979 - 1988

Grunau Company,
Draftsman/Field Engineer 1976 - 1979

EDUCATION

Milwaukee School of Engineering:
1974 - 1976

SUMMARY

Mr. Petrick brings over 25 years of diversified environmental consulting experience to Endpoint Solutions. Tim is a licensed Asbestos Inspector, Asbestos Supervisor and Site Assessor in Wisconsin. Mr. Petrick's areas of expertise include: construction oversight of environmental remediation's, site demolitions, Phase II Environmental Site Assessments, asbestos inspections, asbestos abatements and tank closure assessments. Mr. Petrick has also been involved with site investigations including soil borings, monitoring well installations, soil and groundwater sampling and well abandonments.

Mr. Petrick has performed HAZWOPER training of employees, monitored medical surveillance programs; implemented Safety procedures and maintained a Safety culture among employees.

RELEVANT PROJECT EXPERIENCE

Brief descriptions of representative projects that Mr. Petrick has been involved with are presented below.

Project Site Engineer: Site Assessment, AST demolition, product recovery, contaminated soil cleanup at the Former Torco Oil Site, Chicago, IL. The Metropolitan Water Reclamation District of Greater Chicago, MWRDGC, leased property along the Chicago Sanitary Canal to Torco Oil for bulk oil storage and distribution. The City of Chicago took back the property due to delinquent taxes. Prior to the above ground storage tanks (ASTs) demolition, residual fuel oils needed to be removed via steam heating, then pumping to barges for transportation to another bulk terminal facility. Once all oils were removed, the ASTs were razed and taken off site for recycling, along with concrete, metal piping, metal pipe racks and site buildings.

Project Site Engineer: Landfill Recovery, leachate recovery and methane collection system installation at the Mallard Lake North Landfill, Hanover Park, IL. Mr. Petrick served as the site engineer overseeing the daily contractor activities; insuring that plans and specifications were adhered to, and prepared construction documentation report. The former landfill property is now owned by the Forest Preserve District (FPD) of DuPage County, IL. The site is surrounded by private residences and a public school. A concerned citizen reported methane odors on the school property to EPA Region 5 offices. The EPA

investigated and traced the methane back to the former landfill which closed in the 1970's. The EPA required the FPD to recover the landfill which had settled over time and install a methane collection and leachate recovery systems.

Project Civil Site Engineer: WP&L, a subsidiary of Alliant Energy, constructed a 41-wind turbine farm in Fond du Lac County, Wisconsin, which is capable of generating 62 MW of clean, renewable power. WP&L requested full-time civil construction oversight as they constructed turbine site access roads, crane pads, and crane paths. Mr. Petrick performed nuclear density gauge tests on roads, pads, and paths to ensure proper compaction and provided documentation of proof rolling. Mr. Petrick was also involved in the grouting of turbine bases and anchor bolt tensioning, and anchor bolt repairs.

Project Site Engineer: Environmental assessment and soil cleanup at a former foundry and assembly plant, Racine WI. The client razed their former foundry and assembly plants along the shores of Lake Michigan in Racine, Wisconsin. This client requested full-time oversight for the remediation of the soil below the former buildings. On-site roles included interfacing with client representatives, directing the remediation contractor's activities, and collecting soil samples to document cleanup activities. During the project, several unforeseen site issues arose including five previously unidentified USTs and asbestos pipe insulation. Both of these issues were resolved while on-site without incurring project delays.

Project Site Engineer: Provided on-site construction oversight for the cleanup of asbestos piping and transite panels littered about a field during demolition activities. Responsibilities included meeting with WisDOT and WDNR staff on site to evaluate extent of cleanup, devise a cleanup plan and have WDNR staff approved hand written plan so that cleanup efforts could begin the next day. Cleanup was completed in less than 3 days without delays to construction schedule.

Project Site Construction Oversight: Marquette Interchange, Milwaukee, WI. Provided full-time on-site construction oversight for this multi-year reconstruction of a major urban interchange. As a cost-saving measure, the WisDOT requested full-time environmental oversight of soil excavations. Approximately one-half of the excavated soil was sent to WDNR approved disposal sites, one-quarter was sent to an approved landfill, and the final quarter was sent off-site as common excavation spoils. Issues encountered during construction included underground storage tanks and asbestos piping and insulation. Mr. Petrick's on-site roles included interfacing with WisDOT representatives, construction inspectors, and contractors on a daily basis.

Prior to the reconstruction of the interchange, the former Aldrich Chemical Plant had to be razed. Prior to demolition, the piping was drained and decommissioned, asbestos pipe insulation and transite panels were abated, equipment was salvaged, steel metal beams and copper piping was recycled. Brick and concrete was also recycled with minimal construction debris disposed at a landfill. Mr. Petrick interface with OSHA representatives, WDOT representatives, contractors and the media on this project.



PROFESSIONAL REGISTRATION

Autodesk, AutoCAD Certified User

State of Wisconsin, Technical College System, Part-Time Teacher Approval

40-Hour OSHA Health & Safety Training for Hazardous Waste Operations

8-Hour Refresher for OSHA Health & Safety Training for Hazardous Waste Operations

EMPLOYMENT HISTORY

Endpoint Solutions Corp., *Senior CAD Technician, 2013-Present*

Town of Waterford, *Supervisor, 2013-Present*

Natural Resource Technology, *CAD Technician, 2011-2013*

WCTC, *Civil 3D Instructor, 2010-2013*

Town of Waterford, *Planning Commissioner, 2008-2013*

Ruekert & Mielke, *Engineering Technician, 1999-2008*

EDUCATION

Waukesha County Technical College (WCTC): Associate, Architectural Drafting and Construction Tech – 1999

SUMMARY

Mr. Draskovich's professional background includes Civil 3D Instructor, trainer and mentor of CAD staff. CAD drafting operations in Civil, Environmental and Architectural disciplines. Creating complete plan sets, exhibits/figures and 3D models, including roads, underground facilities, sediment dredging, ash landfills, quantities, visual conceptual models and before and after 3D renderings. Quality Assurance and Quality Control for drawings and standards. Trained in Autodesk AutoCAD, Autodesk Civil 3D, Autodesk 3ds Max Design, Autodesk AutoCAD 360, Microstation basics, Chief Architect, Trimble GPS handheld GeoXH units, Terrasync, Pathfinder Office and Autoturn. Implementation, setup and testing of new software, standards and procedures. Coordination with CAD to GIS and vice versa. Assist with field support to staff with GPS operations. Field oversight of underground facilities; sanitary sewer, storm sewer and water main. Assistance with Groundwater, Soil and Sediment sampling.

REPRESENTATIVE PROJECT EXPERIENCE

Environmental

Drafting exhibits/figures and plans for planning, soil testing and developing solutions for MGP sites, geological cross sections, groundwater contours, existing and abandoned site locations, sampling, testing, wells, monitoring stations, meters and other locations, including base maps, aerial photography, GIS and more.

Drafting of site location data from GPS, total station, bathymetric surveys and LIDAR. Development of 3D models.

Drafting proposed design plan sets for a remedial action construction plan for MGP sites, waterways remediation & sediment removal action plans.

Drafting of cross sections through waterways and impacted upland site areas.

Drafting of plan sets for Storm Water quality.

Volume cut & fill quantities for sediment removal areas within waterways, earthwork for rail spur designs and ash landfills.

QA/QC measures for surface comparisons during construction projects.

Municipal

Drafting exhibits/figures for land use, proposed developments of TID and TIF districts, system maps, topography, aerial photography, CSM, plat of survey, easements, locations maps, detour maps, traffic control and more.

Drafting of design proposed plan sets for urban and rural road sections for local communities road programs. Including proposed storm sewer, water main and sanitary sewer layouts.

REPRESENTATIVE FIELD EXPERIENCE

Environmental

Historic MGP site oversight assistance in Marinette, WI, Milwaukee, WI and Chicago IL. Including air monitoring, tracking waste loading and disposal, excavation operations, ISS operations, sample collection and logging, GPS control and surveying.

Soil boring location layout, oversight and soil sample collection assistance in Chicago, IL.

Monitoring well installation oversight and documentation. Well development and groundwater sample collection and logging in Southeast WI.

Sediment sample collection assistance in Marinette, WI, Sheboygan, WI and Milwaukee, WI. Including vibrocore, push core and ponar sampling methods. Poling and bathymetric measurements as needed.

Ash landfill erosion control measure inspections and waste removal oversight in Southeast WI.

Pre-demolition assessment assistance for asbestos in Southeast WI. Including photos, ceiling, floor and wall sampling collection and logging.

AST inspection assistance in Appleton, WI. Including floor thickness monitoring and logging.

Setup of GPS and Navigation software and hardware for sediment sampling boats. Training and support to field staff.

CAD in the field training and support. Including using digital drawings for site layouts and navigation, digitizing existing site features, as-built during construction of new features and landscape, importing GPS or total station survey points for compliance during construction and other project specific needs.

Municipal (All in Southeast WI)

Preliminary survey, construction stakeout survey and as-built survey assistance. Including GPS, total station and robotic total station methods. Sites included parks, boat launches, and many municipal TID/TIF districts and right-of-ways for road construction/reconstruction, storm sewer, water main and sanitary sewer projects. Assisted with locating of property corners and monuments as needed. Assisted with installation of iron pipes as needed.

Sanitary sewer main, laterals and manhole installation oversight and logging documentation with IDR (Inspector Daily Report).

Water main, services, and hydrants installation oversight and logging documentation with IDR.

Storm sewer main, laterals, manholes, inlets and catch basin installation oversight and logging documentation with IDR.

Asphalt and concrete curb & gutter and sidewalk installation oversight and logging documentation with IDR.

Punch list documentation of construction project items needing addressing as needed.

CAD in the field training and support. Including using digital drawings for site layouts and navigation, digitizing existing site features, as-built during construction of new features and landscape, importing GPS or total station survey points for compliance during construction and other project specific needs.



PROFESSIONAL REGISTRATION

Certified E.I.T — State of Wisconsin

EMPLOYMENT HISTORY

Trinity Consultants, Lake Elmo, MN
(2012-2014) - *Air Quality Consultant*

Endpoint Solutions., Franklin, WI
(2011-2012) - *Technical Consultant*

University of Wisconsin-Water Science
& Engineering Laboratory: Harrington
Research Group, Madison, WI (2011-
2012) - *Student Research Team Man-
ager*

PROFESSIONAL AFFILIATIONS

American Society of Civil Engineers—
Member (2012-Present)

Federation of Environmental Tech-
nologists—Member (2012-Present)

American Society for Testing and Ma-
terials —Member (2012—Present)

EDUCATION

BS in Civil Engineering (2009-2012),
University of Wisconsin; Madison, WI

Experienced air quality consultant with 3 years of work experience in the Environmental, Health and Safety field. Strong drive for creative and cost effective solutions to varying regulatory and permitting needs for a wide array of client industries.

PROJECT EXPERIENCE

Responsible for assembling air quality permit applications including emissions quantifications, air dispersion modeling reports, Best Available Control Technology analysis, regulatory reviews and analyses of both State and Federal rules and necessary administrative form work associated with the construction or modification of stationary sources of emissions.

Led the development, implementation and maintenance of a company wide Environmental Management Info System for a regional utility provider. Project led to reduced overtime costs to client, increased foresight for EHS workload, and decreased risk of forgotten obligations associated with reporting and recordkeeping.

Assisted a cheese manufacturer operating under a Title V permit with alternative permitting options. Led to an analyses of multiple different permitting options and the changes in current operation that would be needed to comply. This permit change has greatly reduced the costs associated with permit compliance and allowed for increased flexibility to make changes in the future.

Worked onsite with a multinational conglomerate corporation to design and support implementation of a system to track required air permit updates for facilities across the country.

Performed unique efforts associated with air pollution including nuisance odor modeling and monitoring at an organics recycling facility and a culpability determination for a consortium of odorous facilities in South St. Paul, MN.

Served as a temporary HSE lead for a regional chemical distribution company. Led an internal audit of previous environmental reports and helped to rectify errors in stormwater, air, wastewater, and hazardous waste reports and records until a permanent replacement was found.

Additional experience in Construction Oversight and Documentation, SWPPP preparation, SPCC preparation and storage tank inspections.



EMPLOYMENT HISTORY

Endpoint Solutions, Franklin, WI
2014-present
Staff Consultant

Ecological Research Partners LLC,
Wauwatosa, WI
2012-2014
Assistant Scientist

Smithsonian National Museum of
Natural History, Washington DC
2010
Researcher, Paleobiology

Hey & Associates, Inc., Brookfield, WI
2007-2008
Field Assistant

EDUCATION

MPhil Geography and Resource
Development (2013)
University of Ghana

BA Geology, summa cum laude
(2011)
Lawrence University

PROFESSIONAL REGISTRATION

40-Hour OSHA Health & Safety Train-
ing for Hazardous Waste Operations

SUMMARY

Accomplished geochemist with 8 years of research and consulting experience in local and international settings. Skilled at working with various stakeholders and acting as a liaison between businesses, scientists, community groups, and government bodies. Experienced in Phase I ESAs, Storm Water Pollution Prevention Plans, risk perception, toxicology, and environmental monitoring. Trained in Trimble handheld GPS, ArcGIS, portable x-ray fluorescence spectrometer, YSI sondes, mineralogical inspection with x-ray diffractometer, and JMP statistical software .

REPRESENTATIVE PROJECT EXPERIENCE

Project Management and Design

Designed and wrote a \$80,000 grant to implement two solar-powered boreholes in Freetown, Sierra Leone. Conducted the feasibility study, needs assessment and wrote the management and evaluation plan. Worked with the Ministry of Water Resources to implement the project within context of local policies.

Worked with the Ga-West District Assembly of Accra, Ghana and Rotary International to design and write a \$35,000 grant. Oversaw the project, which removed a 400 square foot toxic waste pile, built a public toilet facility, implemented waste collection bins, and trained community members in environmental sanitation.

Aided in ecohydrological analyses of the Pike River Watershed, including Somers Branch and phases in the Village of Mount Pleasant. Conducted vegetation surveys, streambed and erosion analyses, and soil sampling.

Research

Participated in an NSF-funded research project that designed an integrated risk assessment of environmental hazards, social and economic dimensions along the Black Sea Coast of Romania. Designed the methodology for collection of field samples related to soil coring, water ecotox tests, and water quality monitoring with YSI sondes.

Undertook field and laboratory research in the investigation of lead contamination in Milwaukee soils as well as soils from Sierra Leone.

Investigated the role of socio-economic status on residents' exposure to air pollution in Ghana's capital city, Accra. Worked with the Ghana EPA to investigate how residents perceive risks to themselves and their neighborhood from pollution from cooking fuels, garbage burning, dust roads, and vehicular emissions.

APPENDIX C

CERTIFICATE OF INSURANCE





CERTIFICATE OF LIABILITY INSURANCE

ENDPS01

OP ID: PB

DATE (MM/DD/YYYY)

07/20/2015

THIS CERTIFICATE IS ISSUED AS A MATTER OF INFORMATION ONLY AND CONFERS NO RIGHTS UPON THE CERTIFICATE HOLDER. THIS CERTIFICATE DOES NOT AFFIRMATIVELY OR NEGATIVELY AMEND, EXTEND OR ALTER THE COVERAGE AFFORDED BY THE POLICIES BELOW. THIS CERTIFICATE OF INSURANCE DOES NOT CONSTITUTE A CONTRACT BETWEEN THE ISSUING INSURER(S), AUTHORIZED REPRESENTATIVE OR PRODUCER, AND THE CERTIFICATE HOLDER.

IMPORTANT: If the certificate holder is an ADDITIONAL INSURED, the policy(ies) must be endorsed. If SUBROGATION IS WAIVED, subject to the terms and conditions of the policy, certain policies may require an endorsement. A statement on this certificate does not confer rights to the certificate holder in lieu of such endorsement(s).

PRODUCER Veitenhaus Insurance Services, 4260 S. Howell Ave. Milwaukee, WI 53207 Patti Blaschka	CONTACT NAME: Patti Blaschka PHONE (A/C, No, Ext): 414-483-0220	FAX (A/C, No): 414-483-4330
	E-MAIL ADDRESS: pattib@veitenhaus.com	
INSURER(S) AFFORDING COVERAGE		NAIC #
INSURER A : Acuity		14184
INSURED Endpoint Solutions Corporation 6871 South Lovers Lane Franklin, WI 53132	INSURER B : Aspen Specialty Insurance Comp	
	INSURER C :	
	INSURER D :	
	INSURER E :	
	INSURER F :	

COVERAGES**CERTIFICATE NUMBER:****REVISION NUMBER:**

THIS IS TO CERTIFY THAT THE POLICIES OF INSURANCE LISTED BELOW HAVE BEEN ISSUED TO THE INSURED NAMED ABOVE FOR THE POLICY PERIOD INDICATED. NOTWITHSTANDING ANY REQUIREMENT, TERM OR CONDITION OF ANY CONTRACT OR OTHER DOCUMENT WITH RESPECT TO WHICH THIS CERTIFICATE MAY BE ISSUED OR MAY PERTAIN, THE INSURANCE AFFORDED BY THE POLICIES DESCRIBED HEREIN IS SUBJECT TO ALL THE TERMS, EXCLUSIONS AND CONDITIONS OF SUCH POLICIES. LIMITS SHOWN MAY HAVE BEEN REDUCED BY PAID CLAIMS.

INSR LTR	TYPE OF INSURANCE	ADDL INSR	SUBR WVD	POLICY NUMBER	POLICY EFF (MM/DD/YYYY)	POLICY EXP (MM/DD/YYYY)	LIMITS
A	GENERAL LIABILITY			L87944	07/15/2015	07/15/2016	EACH OCCURRENCE \$ 1,000,000
	<input checked="" type="checkbox"/> COMMERCIAL GENERAL LIABILITY						DAMAGE TO RENTED PREMISES (Ea occurrence) \$ 100,000
	<input type="checkbox"/> CLAIMS-MADE <input checked="" type="checkbox"/> OCCUR						MED EXP (Any one person) \$ 5,000
							PERSONAL & ADV INJURY \$ 1,000,000
							GENERAL AGGREGATE \$ 2,000,000
	GEN'L AGGREGATE LIMIT APPLIES PER:						PRODUCTS - COMP/OP AGG \$ 2,000,000
	<input type="checkbox"/> POLICY <input checked="" type="checkbox"/> PROJECT <input type="checkbox"/> LOC						\$
A	AUTOMOBILE LIABILITY			L87944	07/15/2015	07/15/2016	COMBINED SINGLE LIMIT (Ea accident) \$ 1,000,000
	<input type="checkbox"/> ANY AUTO						BODILY INJURY (Per person) \$
	<input type="checkbox"/> ALL OWNED AUTOS <input checked="" type="checkbox"/> SCHEDULED AUTOS						BODILY INJURY (Per accident) \$
	<input checked="" type="checkbox"/> HIRED AUTOS <input checked="" type="checkbox"/> NON-OWNED AUTOS						PROPERTY DAMAGE (PER ACCIDENT) \$
							\$
B	<input checked="" type="checkbox"/> UMBRELLA LIAB			EXAFLCL15	07/15/2015	07/15/2016	EACH OCCURRENCE \$ 1,000,000
	<input type="checkbox"/> EXCESS LIAB						AGGREGATE \$ 1,000,000
	<input type="checkbox"/> OCCUR						\$
	<input type="checkbox"/> CLAIMS-MADE						\$
	DED						\$
	RETENTION \$						\$
A	WORKERS COMPENSATION AND EMPLOYERS' LIABILITY			L87944	07/15/2015	07/15/2016	<input checked="" type="checkbox"/> WC STATUTORY LIMITS <input type="checkbox"/> OTHER
	ANY PROPRIETOR/PARTNER/EXECUTIVE OFFICER/MEMBER EXCLUDED? (Mandatory in NH)	Y/N	N/A				E.L. EACH ACCIDENT \$ 1,000,000
	If yes, describe under DESCRIPTION OF OPERATIONS below						E.L. DISEASE - EA EMPLOYEE \$ 1,000,000
							E.L. DISEASE - POLICY LIMIT \$ 1,000,000
B	Professional Liab			ERAFLCK15	07/15/2015	07/15/2016	1,000,000
B	Pollution Liab			ERAFLCK15	07/14/2015	07/15/2016	1,000,000

DESCRIPTION OF OPERATIONS / LOCATIONS / VEHICLES (Attach ACORD 101, Additional Remarks Schedule, if more space is required)

CERTIFICATE HOLDER**CANCELLATION**

SAMPLE ONLY

SHOULD ANY OF THE ABOVE DESCRIBED POLICIES BE CANCELLED BEFORE THE EXPIRATION DATE THEREOF, NOTICE WILL BE DELIVERED IN ACCORDANCE WITH THE POLICY PROVISIONS.

AUTHORIZED REPRESENTATIVE

© 1988-2010 ACORD CORPORATION. All rights reserved.

Endpoint Solutions



**6871 South Lovers Lane
Franklin, WI 53132
Phone: 414-427-1200
Fax: 414-427-1259**